

learn more than a language

international  
projects **ip**  
language courses abroad

# Chichester 2012



## Junior Summer Courses (Ages 12-17)

international  
projects **ip**  
language courses abroad

offaehrte  
sprachreisen

europa  
school of english

celf centre d'enseignement  
de langues en france

IP International Projects  
Martinistrasse 60  
28195 Bremen  
Germany

Phone: ++49-421-7925830  
Fax: ++49-421-7925820  
info@internationalprojects.com  
www.internationalprojects.com

## About IP

Every year we bring together more than 3000 students from all over the world in **several European destinations** to learn English, French, Spanish, or German. With over 25 years of experience, we have gained an unrivalled insight into what students want from their language courses. Our aim is to combine **proficient language learning** with a great summer holiday experience in an international atmosphere.

Our summer schools are created for young people who want to belong to an **international community**. They are run by our International Team dedicated to making their stay an international experience. We choose each of our centres with great care, so students can enjoy their holidays in an exciting and safe summer destination.



## About Chichester

- Chichester is a small city in the Southern England's West Sussex county, with a population of approximately 25,000 people
- Chichester combines modern English lifestyle with a sense of the past, as it is one of the most famous historic Roman cities in the UK
- 12 miles east of Portsmouth, 40 miles west of Brighton, 70 miles south of London
- For further information: [www.chichester.gov.uk](http://www.chichester.gov.uk)
- Public transport: megarider unlimited across West Sussex weekly £19.50



## Local Facilities

- Excellent shopping and entertainment facilities in the town centre
- Banks, post-office and supermarkets
- Large choice of local restaurants, cafés, and bars
- Two cinemas located in the town centre
- 15-minute bus ride to the next beach (Bognor Regis and West Wittering)

## Sports Facilities in Town

- Butlin's Holiday Resort Leisure Park in Bognor Regis (8 miles from Chichester)
- Chichester has a large sports complex- the Westgate Leisure Centre, with a large swimming pool, gym, squash courts, and other fitness activities
- Water sports of all kinds (Surfing, Windsurfing, Sailing, Kayaking, etc.) at the nearby seaside resorts of Bognor Regis or West Wittering



**All the above mentioned activities are not included in the programme but can be booked on special request at the centre!**

## Town Map



## How to get there?

- By plane to **London Heathrow**: For students coming to the UK, we recommend the IP Low Budget Transfer: which is bookable on a Saturday or Sunday before 17.00. If you have booked the **low budget transfer** please make your own way to Terminal 5 / Meeting Point for 17.00. A member of staff will be at the airport to welcome our students between the hours of 10.00 and 17.00. The coach to the centre will leave at 18h00. On the day of departure our low budget shuttle will leave the centre between 6.00 and 8.00 and arrive at London Heathrow around 12.00. Students may have to wait before their flight departs, but please, bear in mind that they should check in 2 hours before take-off. This requires a flight departure from Heathrow Airport after 14.00.
- If you're arriving or **leaving outside this timeframe or at any other airport** you can book a **private transfer**. Private transfers are offered from London Heathrow, London Gatwick, London Stansted, London City (2 hours), Bournemouth, and Southampton airports (1hr). Our Meet & Greet-Service will be waiting for you at the customs exit and ensure a safe transfer to the centre. On the day of departure, private transfers will leave the centre as required to make sure that the students are also able to complete a timely check-in. Please keep in mind that students may have to wait a length of time before their flight departs in order for our staff to comply with a 2 hour pre-departure check-in.
- **Groups** will generally receive a Meet & Greet-Service at their customs exit from a member of IP staff and get accompanied to the departure Terminal.
- On the day of departure we will drop our clients off at the airport. If they would like to be taken directly to the check-in desk, please inquire about our **Unaccompanied Minor Service**. You also have to book our UM-Service if your client uses the UM-service for the flight.
- **By Eurostar (train)**: Meet & Greet Service and transfers are offered from London St. Pancras (2 hours).
- **By train**: You can take the train on your own to Chichester from London Victoria (1 ½ hours), walking distance to the campus approx. 15 minutes; taxi costs approximately £5.
- **By National Express**: With the National Express Coaches you will have to change coaches once at Gatwick Airport or Brighton. From Gatwick Airport or Brighton you can travel directly to Chichester (3 hours).The coach station is located in the town centre, with the campus only a 15 minute walk away. For more information please visit: [www.nationalexpress.co.uk](http://www.nationalexpress.co.uk)

**Please note: transfers are not included in the package!**

## Centre Description - Bishop Otter Campus

Our summer school for juniors (12 – 17 years) is based out of the Bishop Otter Campus at the University of Chichester. This attractive university campus is situated in the middle of Chichester's vast parks and gardens. The beautiful campus grounds are close to the town centre, and offer a safe atmosphere for an unforgettable holiday.

All students have lessons and activities on campus. During the day students have access to a wide variety of leisure facilities.

In peak season we have about 100 students in the centre.

Our students come mainly from Germany, Italy, Spain, Austria, France and Romania. This diverse set-up allows our students to live in a multi-cultured atmosphere and use English as their main means of communication.

**A wide variety of especially sport activities are offered on campus, like sports tournaments and cheerleading.** See sample programme for more details.

Students are under the supervision of our international team (generally, one supervisor is responsible for 15 students aged 13-15, as well as one supervisor for 10 students aged 10-12). Further information about the members of staff and the languages they speak is available before arrival to the course centre.



### Location

- 10-minute walk from the town centre
- 15-minute bus ride to the next beach (Bognor Regis and West Wittering)
- Bus stops directly at the campus
- Bank, post-office, and supermarkets are situated in the town centre
- Cafés, bars, and restaurants can be found in the town centre

### Facilities

- Traditional English classrooms in University House
- Dining Hall: seats approximately 200 students
- Coffee bar for light snacks and hot drinks
- Large park and green area on the campus
- Large playing field for Football, Volleyball, Netball, Basketball, Handball etc.
- IP Ocean Lounge: meeting point for our students.
- Refrigerator, e.g. for medicine

### Seasonal Contact Details

IP Chichester  
University of Chichester  
College Lane  
Chichester  
PO19 6PE  
West Sussex  
Great Britain  
[chichester@internationalprojects.com](mailto:chichester@internationalprojects.com)

Emergency phone number (24hrs a day): 07435 842 832

## Residential Accommodation - Bishop Otter Campus

We offer two types of accommodation in study blocks: En-suite single rooms and Standard single rooms.

### Bishop Halls

- Study blocks with six rooms on each floor
- En-suite single rooms
- Beds, wardrobe, desk and chair are placed in every room
- Big wardrobe / not lockable
- Floor: carpet
- Lockable rooms, normally one key card per student
- Room size: approx 4.2 square metre



### Springfield / Hammond Halls

- Study blocks with six rooms on each floor
- Standard single rooms
- Communal toilet and bath facilities in the corridor (2 toilets, 1 shower, and 1 bath per floor)
- Beds, wardrobe, desk and chair are placed in all rooms
- Big wardrobe / not lockable
- Floor: carpet
- Lockable rooms, normally one key card per student
- Room size: approx 4.2 square metre

### General Information

- 1 key or key card per student
- Bedding: provided and changed weekly
- Towels: provided and changed weekly
- Kitchen is not equipped and not for students' use
- Rooms and washrooms are cleaned once a week
- Pay phones on campus
- No safe, but you will be provided with a key to lock your room
- Adapter: necessary, but not provided
- Self-service laundry on campus ( £1,60 per washing machine, £1 per dryer)

### Meal Plan

Students receive full-board accommodation. Vegetarian options offered daily, Gluten-free, Lactose-free, Kosher, or Halal food is available upon request.

- Breakfast: 7.30 - 8.30 in the dining hall
- Lunch: 12.30 - 13.00 in the dining hall
- Dinner: 17.30 - 18.30 in the dining hall

Please note: After full day trips to London a cold dinner will be provided, since the kitchen is closed at the time of return.

## Chichester Sample Menu 2012

	MONDAY	TUESDAY	WEDNESDAY	THURSDAY	FRIDAY	SATURDAY	SUNDAY
<b>BREAKFAST</b>	Toast and Croissant Butter & Jam Cereal Hot Drinks (Coffee, Tea) Orange Juice Fruit Yoghurt	Toast and Croissant Butter & Jam Cereal Hot Drinks (Coffee, Tea) Orange Juice Fruit Yoghurt	Toast and Croissant Butter & Jam Cereal Hot Drinks (Coffee, Tea) Orange Juice Fruit Yoghurt	Toast and Croissant Butter & Jam Cereal Hot Drinks (Coffee, Tea) Orange Juice Fruit Yoghurt	Toast and Croissant Butter & Jam Cereal Hot Drinks (Coffee, Tea) Orange Juice Fruit Yoghurt	Toast and Croissant Butter & Jam Cereal Hot Drinks (Coffee, Tea) Orange Juice Fruit Yoghurt	Toast and Croissant Butter & Jam Cereal Hot Drinks (Coffee, Tea) Orange Juice Fruit Yoghurt Cooked Breakfast
<b>LUNCH</b>	Spaghetti Bolognese OR Vegetable Burger Bap Vegetable Potatoes Blueberry Muffin OR Fruit  Salad buffet	Ham & Pineapple Pizza OR Quorn Balti & Rice Vegetables Potatoes Caramel Shortbread OR Fruit  Salad buffet	Chicken Korma & Rice OR Spinach & Feta Filo Puff Vegetables Potatoes Fruit Yoghurt OR Fruit  Salad buffet	Meatballs & Pasta OR Vegetable Kiev Vegetable Potatoes Jam Donut OR Fruit  Salad buffet	Battered Haddock OR Quorn Lasagne Vegetables Potatoes Chocolate Muffin OR Fruit  Salad buffet	Lamb Cutlet OR Mushroom Ravioli Vegetables Potatoes Fruit Yoghurt OR Fruit  Salad buffet	Roast Chicken OR S&S Vegetables & Rice Vegetables Potatoes Ring Donut OR Fruit  Salad buffet
<b>DINNER</b>	Breaded Scampi OR Cheese & Onion Pizza Vegetable Potato Salad Chocolate Sponge with Sauce OR Fruit  Salad buffet	Chicken Kiev OR Broccoli Quiche Vegetables Potatoes Strawberry Gateau OR Fruit  Salad buffet	Braised Sausages OR Creamy Vegetable Pasta Vegetables Potatoes Peach Crumble & Cream OR Fruit  Salad buffet	Chicken Burger Bap OR S&S Veggie Spring Rolls & Rice Vegetables Potatoes Chocolate Gateau OR Fruit  Salad buffet	Cottage Pie OR Veggie Sausages & Gravy Vegetables Potatoes Jam Sponge & Custard OR Fruit  Salad buffet	Chicken Pasta OR Cheese & Onion Pasty Vegetables Potatoes Lemon Gateau OR Fruit  Salad buffet	Lamb Burger Bap OR Macaroni Cheese Vegetables Potatoes Apple Pie & Cream OR Fruit  Salad buffet

**Breakfast:** 5 items only, with unlimited toast, hot drinks include coffee and tea.

**Lunch and Dinner:** Squash/water served with all meals, salad served with oil & vinegar and bread.

## Lessons

- Our summer school is accredited by British Council
- Take place on Campus (see address above),
- 15 classrooms
- **Courses available:** General English Course (15 x 45 minutes per week), Intensive English Course (20 x 45 minutes per week), **One-to-One lessons available on request.**
- **Trinity Oral Examination** is available (needs to be booked in advance, please book Intensive Course for preparation). **Exam dates: 13<sup>th</sup> July, 27<sup>th</sup> July, 10<sup>th</sup> August 2012**
- **Levels:** Lower Intermediate (A2), Intermediate (B1), Upper Intermediate (B2), and Advanced (C1)
- **Placement Test** on the 1<sup>st</sup> day at 9.00, class allocation at 11.00
- **Teaching material provided**
- **IP Certificate** at the end of the course
- Our courses follow the European Framework of Reference Levels
- There will be no more than **15 students** per group. Generally, students do not share the same native language, but are nearly the same age
- **90 % of our teachers are native speakers** and a maximum of 10 % are native level speakers. All of our teachers are qualified, which means either a TEFL qualification or a teaching qualification (PGCE Primary / PGCE Secondary for Modern Languages).
- **Lesson times:** 1<sup>st</sup> lesson: 9.00-9.45; 2<sup>nd</sup> lesson: 9.45-10.30; Break: 10.30-11.00; 3<sup>rd</sup> lesson: 11.00-11.45; 4<sup>th</sup> lesson: 11.45-12.30



## Supervision

Our friendly and helpful **International Team** with staff members from England, Germany, France, Spain, Russia and other countries will run a fully supervised activity programme and guarantee supervision. Our supervision ratio depends on the age range of students: for students 12 and younger we follow a ratio of 1:10, for the age group 13 and older we follow the ratio of 1:15. The members of

our team have been carefully selected for their responsible and caring attitude, as well as their fun-loving and outgoing personalities. They are the people your students can turn to at any time for assistance.

Our members of staff have been trained in three different sessions totalling ten days of intense preparation for their summer job.

## Sample Programme

**We offer an exciting and supervised activity programme during the afternoons & evenings, 7 days a week.**

	MONDAY	TUESDAY	WEDNESDAY	THURSDAY	FRIDAY	SATURDAY	SUNDAY	
<b>MORNING</b>	Breakfast	Breakfast	Breakfast	Breakfast	Breakfast	Breakfast	Breakfast	
	9.00-10.30 Lessons	9.00-10.30 Lessons	9.00-10.30 Lessons	9.00-10.30 Lessons	9.00-10.30 Lessons			
	10.30 IP Ocean Lounge							
	11.00 Lessons	11.00 Lessons	11.00 Lessons	11.00 Lessons	11.00 Lessons			
	12.30 Assembly							
	Lunch	Lunch	Lunch	Lunch	Lunch	Lunch	Lunch	
<b>AFTERNOON</b> STUDENTS CAN CHOOSE BETWEEN SEVERAL ACTIVITIES AVAILABLE	14:00 -17:00 Workshops: Arts and Crafts (origami, bracelets, design cards/masks, face-paint), Dance, Health and Beauty (nails, make-up, henna, breathe your stress away) Scavengers hunt, Open Stage Preparation Optional activity with supplement on offer On demand: cultural activities					14.00 Welcome Meeting	14.00-17.00 Town Walk Or Town Quiz	
	14.00-17.00 <b>Sports Tournaments, Cheerleading</b> (Softball, (Beach-)Volleyball, Basketball, Football, Handball) Optional activity with supplement (bowling, swimming, minigolf)				15.00 London Preparation	15.00 Farewell Meeting	14.00-17.00 Campus Sports	
	14.00-17.00 Ip Ocean Lounge							
	TTT	TTT	TTT	TTT	TTT	TTT	TTT	
	Dinner	Dinner	Dinner	Dinner	Dinner	Dinner	Dinner	
<b>EVENING</b>	19.30-22.00 Welcome Party	19.30-22.00 Theme Night	19.30-22.00 Poker	19.30-22.00 Open Stage	19.30-23.00 IP Disco	19.30-22.00 Quiz Night	19.30-22.00 Film Night	
<b>TRIPS</b> 2 HD-TRIPS AND 1FD-TRIP INCLUDED PER FORTNIGHT.		13.30-18.00 Winchester or Portsmouth		13.30-18.00 Bognor Regis Beach Trip or Bournemouth		8.00-20.00 London	9.00-18.00 Brighton or Bath	

\*TTT (Time to talk): Students meet their personal supervisor

## Trip Programme

**2 Half-Day Trips and 1 Full-Day Trip included per fortnight. Additional trips can be booked at the centre. Entrance fees are not included for excursions!**

### Full-Day: London

If you travel to England, you simply have to see London! We try to get as much as possible out of our day in this fascinating city. We leave Chichester at around 08h00 and after a short stop at Heathrow Airport we'll arrive in the city centre of London at about 11h00. During our guided tour we will pass Trafalgar Square, The Mall, Buckingham Palace, Birdcage Walk, Houses of Parliament, Big Ben, Westminster Abbey, London Eye, and Piccadilly Circus (entrance fees are not included). After our tour it's shopping time! Shopping is not supervised and is only permitted in groups with minimum of 3 students. Our shopping venues include Oxford Street, Regent Street, and Carnaby Street.

Alternatively, you may choose to visit the Hard Rock Café or the famous Covent Garden. At Covent Garden you will have the opportunity to watch a variety of street artists and jugglers. As you may notice, the possibilities are endless, and you will have a difficult time deciding how to spend your one magnificent day in London. At about 18h00 we will leave London; tired after an exciting day, but with countless memories to look back on. When we return to the centre around 21h30 we will definitely be ready for a good night's sleep!

### Full-Day: Brighton

Brighton is without a doubt Britain's most popular seaside resort offering some of the best shopping outside of London! It has become one of the most fashionable and vibrant cities in the UK. Our sightseeing walk will take us past the famous Piers and the Royal Pavilion (entrance fees not included). These have been major attractions for decades, as well as the famous Lanes Shopping Quarter. Departure for Brighton is at approximately 08h30, and we will arrive back in Chichester in time for dinner at 18h00.

### Full-Day: Bath

Bath's "heyday" was in the 18<sup>th</sup> century when it was a fashionable spa town, and was the "hot spot" for English high society. Much of the architecture of Bath dates back to this time, and the city is famous for its elegant Georgian townhouses, and sweeping crescents. Today Bath is one of the most beautiful cities in the UK, and has been declared a World Heritage Site by UNESCO.

We will leave the centre at around 08h30 and arrive in Bath approximately two hours later. After a guided tour around the city, your free time may be spent shopping or visiting the Roman Bath & Pump Room, Pulteney Bridge, Bath Abbey, or the Royal Crescent (entrance fees not included). At about 16h00 we will leave Bath and return to Chichester around 18h00.

### Half-Day: Winchester

For our half-day trip to Winchester, the former English Capital, we will leave Chichester around 14h00. After our arrival we will take a sightseeing walk, viewing the cathedral and castle – home to King Arthur's Round Table. After our walk, you will have time to spend shopping or visiting the rest of town. Winchester is also an ideal place for lovers of the written word. Winchester has some of the best bookshops in all of Great Britain. Dinner will be provided back at the centre.

### Half-Day: Bognor Regis Beach Trip

Bognor Regis is a small seaside town that traces its roots back to the days when it was a small fishing and smuggling village. During this half-day trip you will have the chance to explore Bognor Regis beach or go shopping in one of the many souvenir shops. We will leave the campus around 1400h and be back for dinner at 1800h.

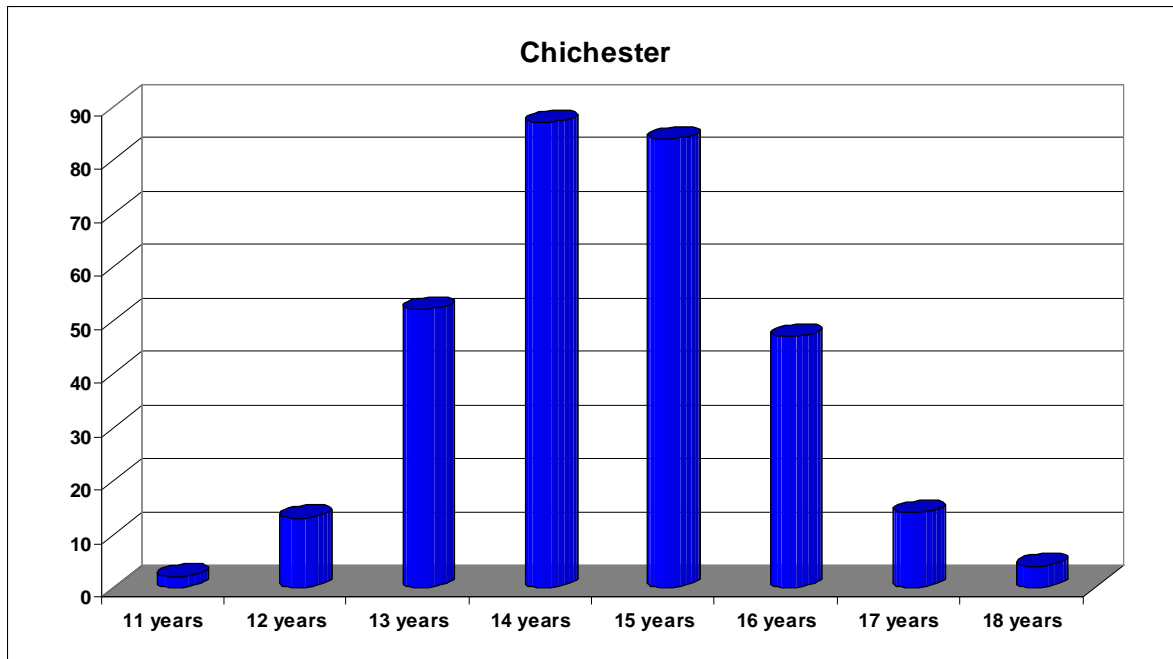
### Half-Day: Portsmouth

Portsmouth is home to the world's oldest dry dock that is still in use, and to many famous ships, including Nelson's famous flagship HMS Victory. Portsmouth's military activity has declined in recent years, but it still remains a major dockyard and base for the Royal Navy. There is a lot to discover on our excursion to Portsmouth, e.g. the D-Day museum, the Royal Naval Museum, or the Spinnaker Tower at Gunwharf Quays (no entrance fees included). We will depart for Portsmouth at around 1400h and be back in time for dinner.

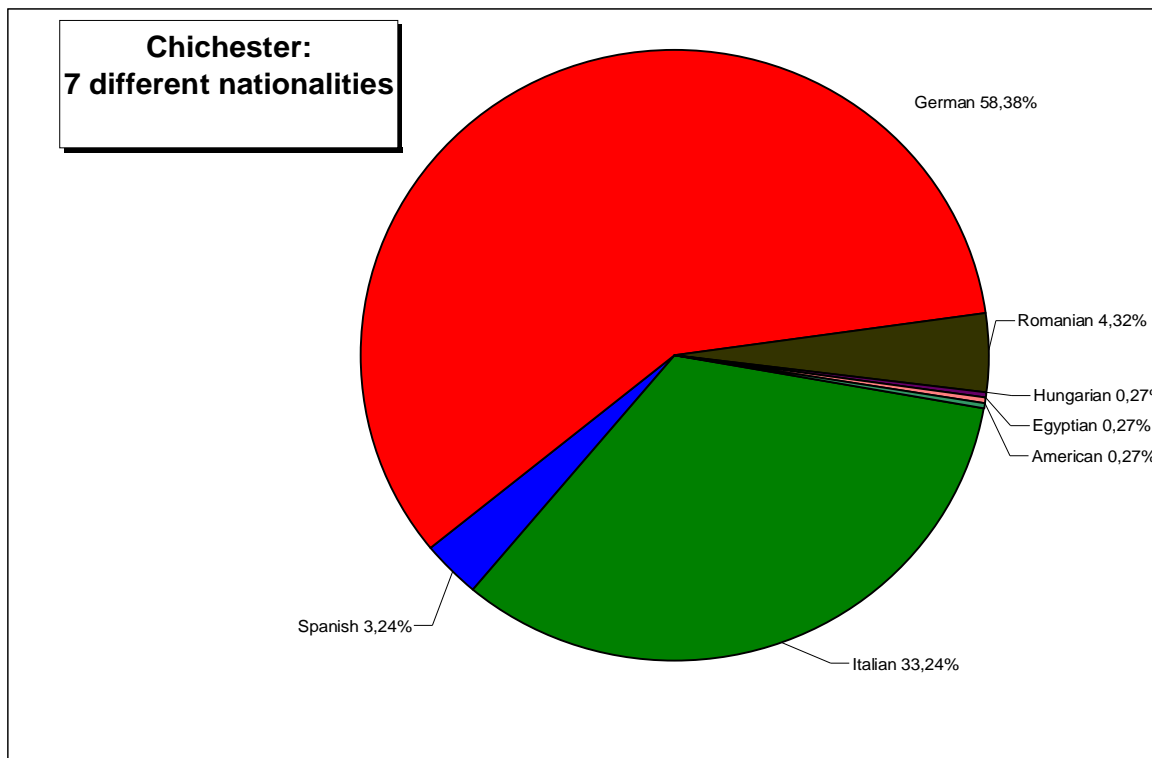
### Half-Day: Bournemouth

Bournemouth is famous for its 7 miles of sandy beaches that run from Hengistbury Head in the east, to Sandbanks in Poole in the west. With this in mind you may decide to spend your time lounging on the beach, which has been awarded for its cleanliness and water quality, or go shopping in the town centre. We will leave for this half day trip around 1400h and be back in the centre for dinner.

### Students 2011 – Ages



### Students 2011 – Nationalities



## International Projects' Rules and Regulations for Students

- **Alcohol and Drugs** The consumption of alcohol and drugs is strictly forbidden. Law prohibits young adults under the age of 18 from buying or consuming alcohol in the UK.
- **Pubs, Discos, and Amusements** Young adults under the age of 16 are not allowed to enter pubs in the UK. Students 16 years of age are permitted in a pub until 21.30, but are only able to buy and consume soft drinks. Visiting pubs is only advisable if you are accompanied by a member of staff, group leader, or home stay host. Discos / Nightclubs and amusement arcades are strictly out of bounds for all students under 18 years of age.
- **Smoking** It is illegal for young adults under the age of 18 to buy and smoke cigarettes at all destinations.
- **Theft** Shoplifters and thieves are prosecuted in the UK, irrespective of the value of the stolen article.
- **Weapons and Dangerous Articles** All weapons (including flick-knives) are forbidden. CS gas is also illegal.
- **Fire Extinguishers** Fire extinguishers are located throughout the centres and their buildings. These are for emergency use only. If a fire extinguisher is tampered with in ANY way, students will be fined for its misuse.
- **Going Out** Students are allowed to go out in the evenings in groups with a minimum of 3 students pending the Centre Manager's permission. They must adhere to the following laws and be back in the residence or with their private host by: Ages 13 & 14: 22h00, 15 & older: 24h00. If you are going to be late please call your host or centre office in order to ensure that we know where you are and do not have to look for you. The above times do not apply when students are involved in an organised evening activity. **This rule does not apply to students under the age of 13 since they have to be supervised at all times.**
- **Leaving the Campus / College grounds/ Arranging their own excursion** Students under the age of 17 are not allowed to leave the destination town or village unless they are accompanied by a member of staff.
- **Doors** Entrance doors to the residences **must not** be kept open. This is for your own safety. Theft can, and does occur. Careless security on your part will place you and your belongings at risk.
- **Compulsory Activities** All lessons along with the daily morning assembly must be attended.
- **Damage** Incidences of damage to property and buildings caused by misuse or vandalism will be dealt with severely. Students will have to pay for ALL damages.
- **Private** Doors which are marked with signs that state "private" are not to be opened. Some private areas will be unlocked for fire safety reasons, but entrance is still forbidden.
- **Noise** Students are asked to respect those around them, and keep noise to a minimum when returning to residences or private homes late in the evening. Social areas in the residences may be used after the evening activity finishes, but students should be in their rooms by 23.00. Students are not to congregate outside residences late in the evening. Many centres are situated in residential areas – please be considerate of those who live close by.
- **Mobiles** The use of mobile telephones during lesson time is strictly prohibited. Failure to comply with this may result in staff confiscating your mobile phone. IP staff does not accept any responsibility for the loss of or damage to mobile phones.
- **Swimming** Swimming in the sea is allowed on the condition that your parents have not specified otherwise. Swimming in the sea is not an organised IP activity, and therefore IP staff cannot be held responsible for student safety. Swimming in the sea when the red flag is flying is absolutely forbidden.
- **Internationalism** International Projects' aim is to bring young people from all over the world together in an environment where they can meet friends and have fun. Racist or sexist behaviour towards other students will not be tolerated.

## Parental Permission

We guarantee that our qualified staff will supervise all elements of the IP programme. However, some of the additional activities such as: diving, sailing, surfing, riding a bike, and horse riding we work with local providers, and require your permission for your child to take part in these activities. The same applies for activities undertaken by your son/daughter on their own outside of the IP Programme.

Please complete the form below in order to stop your child from taking part in the following activities:

- My son/daughter is allowed to be in town on his / her own after .....(please specify).
- My son/daughter is allowed to swim in the sea at her / his own risk.
- In case of hospitalisation, I authorize the legal representative of IP to take all necessary decisions (medical treatments, hospitalisation, surgery) regarding my child in respect of the medical report and will reimburse all medical expenses that could possibly be engaged by IP for my child.

I, THE UNDERSIGNED.....(First name).....(Surname)  
PARENT OR LEGAL GUARDIAN OF:

First name..... Surname.....

Date of birth.....

Staying in ..... Arrival Date: .....

I do not want my child to take part in the activities mentioned in point 1 to 3 (please ignore if not applicable)

DATE:.....SIGNATURE: .....

PLEASE NOTE: THIS AUTHORIZATION HAS TO BE RETURNED TO THE IP OFFICE IN BREMEN ONE WEEK BEFORE ARRIVAL.

If the Parental Permission form is not returned, IP assumes that the parents agree to the set standards and procedures which govern our language holidays and are based on the laws of the destination country.