

learn more than a language

international
projects **ip**
language courses abroad

Winchester 2012



Junior Summer Courses (Ages 12-17)

international
projects **ip**
language courses abroad

offaehrte
sprachreisen

europa
school of english

celf centre d'enseignement
de langues en france

IP International Projects
Martinistrasse 60
28195 Bremen
Germany

Phone: ++49-421-7925830
Fax: ++49-421-7925820
info@internationalprojects.com
www.internationalprojects.com

About IP

Every year we bring together more than 3000 students from all over the world in **several European destinations** to learn English, French, Spanish, or German. With over 25 years of experience, we have gained an unrivalled insight into what students want from their language courses. Our aim is to combine **proficient language learning** with a great summer holiday experience in an international atmosphere.

Our summer schools are created for young people who want to belong to an **international community**. They are run by our International Team dedicated to making their stay an international experience. We choose each of our centres with great care, so students can enjoy their holidays in an exciting and safe summer destination.



About Winchester

Winchester, capital of ancient England, is today one of the most beautiful cathedral cities in the UK. It is renowned for its ancient history, cathedral, and high standard of living which is reflected in all the old and glorious looking houses.

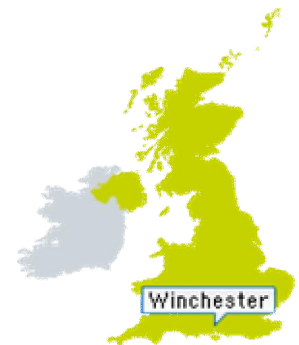
Winchester is located in the county of Hampshire, in the centre of southern England, and just one hour away from London.

Further information: www.visitwinchester.co.uk

Public transport in Winchester (approx. prices): Single £ 1,80 – 2,00, £ 7,5 per day, megarider unlimited across Hampshire £ 19.50 per week

Local Facilities

Excellent shopping facilities in the town centre
 Banks, post-office, and supermarkets in the town centre
 Large choice of local restaurants, cafés, and bars
 Cinemas in the town centre
 Winchester Cathedral, built in 1079
 Great Hall with the legendary 'Round Table of King Arthur'
 Winchester College, Jane Austin House



Sports Facilities in Town

Golf (Winchester Golf Club) – with licence only
 Tennis on campus (with own raquets)
 Swimming

All the above mentioned activities are not included in the programme but can be booked on special request in the centre!

How to get there?

By plane to **London Heathrow**: For students coming to the UK, we recommend the IP Low Budget Transfer: which is bookable on a Saturday or Sunday before 17.00. If you have booked the **low budget transfer** please make your own way to Terminal 5 / Meeting Point for 17.00. A member of staff will be at the airport to welcome our students between the hours of 10.00 and 17.00. The coach to the centre will leave at 18h00. On the day of departure our low budget shuttle will leave the centre between 6.00 and 8.00 and arrive at London Heathrow around 12.00. Students may have to wait before their flight departs, but please, bear in mind that they should check in 2 hours before take-off. This requires a flight departure from Heathrow Airport after 14.00.

If you're arriving or **leaving outside this timeframe or at any other airport** you can book a **private transfer**. Private transfers are offered from London Heathrow, London Gatwick, London City (2 hours), Bournemouth, and Southampton airports (1-1.5 hours). Our Meet & Greet-Service will be waiting for you at the customs exit and ensure a safe transfer to the centre. On the day of departure, private transfers will leave the centre as required to make sure that the students are also able to complete a timely check-in. Please keep in mind that students may have to wait a length of time before their flight departs in order for our staff to comply with a 2 hour pre-departure check-in.

Groups will generally receive a Meet & Greet-Service at their customs exit from a member of IP staff and get accompanied to the departure Terminal.

On the day of departure we will drop our clients off at the airport. If they would like to be taken directly to the check-in desk, please inquire about our **Unaccompanied Minor Service**. You also have to book our UM-Service if your client uses the UM-service for the flight.

By Eurostar (train): Meet & Greet Service and transfers are offered from London St. Pancras (4 hours).

By train: You can take the train independently from London Waterloo to Winchester (1hour), walking distance to the King Alfred Campus is approx. 15 minutes; taxi costs approximately 5 £.

By National Express: The National Express coaches travel from London (and London Heathrow) to Winchester directly (ca. 2 hours). The coach station is located in the Winchester city centre. Campus is a an approximate 15 minute walk from the station. www.nationalexpress.co.uk

Please note: transfers are not included in the package!

Centre description – King Alfred Campus

Our summer school for juniors (12 – 17 years) is located at the self-contained King Alfred Campus of Winchester University. Located west of the city, the King Alfred Campus is within walking distance to the town centre (a safe 10 minute footpath will lead you to Winchester cathedral). This very green and hilly university campus offers a mixture of new and historic buildings.

All students have lessons and activities on campus. During the day students have access to wide variety of leisure facilities. Students can choose between home stay accommodation in Winchester and surrounding areas, and residential accommodation on campus.

During peak season we have up to 100 students at the centre. Students come mainly from Germany, Italy, Spain, France, and Eastern Europe. This allows our students to experience other cultures and use English as a means of communication.

A variety of activities are offered on campus. IP Special in Winchester: **News Workshops with weekly published IP Times**. Please see the sample programme for more details.

Students are under the supervision of our international Team (generally, one supervisor is responsible for 15 students aged 13-15, as well as one supervisor for 10 students aged 10-12). Further information about the members of staff and the languages they speak is available before arrival to the course centre.



Location

15-minute walk from the town centre

30 minutes from the nearest beach (West Wittering)

Bank, post-office, and supermarkets are located in the town centre, as well as a café and a small shop on campus

Cafés, bars, and restaurants can be found in the town centre

Facilities

Modern and redecorated classrooms in an old villa just 3 minutes from the Refectory

Dining hall: large room for approximately 250 students

Large open area for activities such as: Soccer, Tennis, and Volleyball

Sports facilities: sports-hall can be used twice per week

IP Ocean Lounge: focal meeting point for our students

IP office and teacher's room

Refrigerator, e.g. for medicine

Internet access (supervised only)



Campus Map



Seasonal Contact Details

IP Winchester
The University Of Winchester
King Alfred Campus
Sparkford Road
Winchester
SO22 4NR
Great Britain
winchester@internationalprojects.com

Emergency phone number (24hrs a day): 07435 842 831

Residential Accommodation – King Alfred Campus

Modern study blocks are used for residential accommodation. The different residences are within easy reach of all activities, lessons and meals.

Standard Halls (52 rooms)

Typical English building with three levels
 Single standard rooms
 Ratio of showers to students is 1: 6
 Beds, wardrobe, desk, washing basin, dresser and a chair in every room
 Floor: carpet
 Lockable rooms, with generally one key per student
 Room size: approx 4.2 metres

West Downs Student Village

Two-story building
 All rooms are single en-suite
 Kitchen which can be used as common room (no cooking allowed),
 Beds, wardrobe, desk, and a chair in every room
 Floor: carpet
 Lockable rooms, normally one key per student
 Room size: approx 4.2 metres
 10 minute walk from the dining hall



General Information

1 key per person
 Bedding: provided and changed weekly
 Towels: provided
 No cookers available/refrigerators may be used
 Rooms and washrooms cleaned once a week
 Payphones on campus
 Self-service laundry on campus (£2,20 per washing machine, £1,50 per dryer)
 No safe, but safe storage for valuables available
 Adapter: necessary, but not provided

Meal Plan

Students receive full-board accommodation in the campus' self-service dining hall. Vegetarian options offered daily, Gluten-free, Lactose-free, Kosher, and Halal food available on request.

Breakfast: 8.00 - 8.30 in the dining hall
 Lunch: 12.45 - 13.00 in the dining hall
 Dinner: 18.30 - 19.00 in the dining hall

Please note: After full day trips to London a cold dinner will be provided as the kitchen is closed at the time of return.

Winchester Sample Menu 2011

	MONDAY	TUESDAY	WEDNESDAY	THURSDAY	FRIDAY	SATURDAY	SUNDAY
BREAKFAST	Cereal & Milk Croissants & Rools Yoghurt/Preserves Sliced ham and cheese Fruit Coffee/Tea	English Breakfast Toast Yoghurt/Preserves Sliced ham and cheese Fruit Coffee/Tea	Cereal & Milk Croissants & Rools Yoghurt/Preserves Sliced ham and cheese Fruit Coffee/Tea	Cereal & Milk Croissants & Rools Yoghurt/Preserves Sliced ham and cheese Fruit Coffee/Tea	English Breakfast Toast Yoghurt/Preserves Sliced ham and cheese Fruit Coffee/Tea	Cereal & Milk Croissants & Rools Yoghurt/Preserves Sliced ham and cheese Fruit Coffee/Tea	Cereal & Milk Croissants & Rools Yoghurt/Preserves Sliced ham and cheese Fruit Coffee/Tea
LUNCH	Chicken Kiev OR Mushroom Ravioli in Tom Sauce Vegetables Potatoes Yoghurt OR Fruit	Beef stir-fry with noodles OR Cheese & tomato pizza Vegetables Potatoes Yoghurt OR Fruit	Chicken leg with curry sauce OR Vegetable quiche Vegetables Rice Yoghurt OR Fruit	Scampi & lemon OR Cheese & onion omelette Vegetables Chips Yoghurt OR Fruit	Cold meats OR Roasted vegetable frittata Vegetables Potatoes Yoghurt OR Fruit	Hot Lunch	Hot Lunch
	Salad bar Jacked Potatoes Bread Rolls / baguette Pasta / Sauce	Salad bar Jacked Potatoes Bread Rolls / baguette Pasta / Sauce	Salad bar Jacked Potatoes Bread Rolls / baguette Pasta / Sauce	Salad bar Jacked Potatoes Bread Rolls / baguette Pasta / Sauce	Salad bar Jacked Potatoes Bread Rolls / baguette Pasta / Sauce	Salad bar Jacked Potatoes Bread Rolls / baguette Pasta / Sauce	
DINNER	Breaded Pork steak OR Vegetarian curry Vegetables Rice Dessert OR Fruit	Theme menu	Beef Lasagne OR Fish Burger Vegetables Garlic bread Dessert OR Fruit	Roast chicken leg & stuffing OR Cod goujons Vegetables Potatoes Dessert OR Fruit	Chicken Breast mushroom sauce OR Spinach puffs Vegetables Chips Dessert OR Fruit	Hot dogs & onions OR Cannelloni Bake Vegetables Potatoes Dessert OR Fruit	Gammon steak with cheese sauce OR Vegetable pancake roll Vegetables Chips Dessert OR Fruit
	Salad bar Jacked Potatoes Bread Rolls / baguette Pasta / Sauce	Salad bar	Salad bar Jacked Potatoes Bread Rolls / baguette Pasta / Sauce	Salad bar Jacked Potatoes Bread Rolls / baguette Pasta / Sauce	Salad bar Jacked Potatoes Bread Rolls / baguette Pasta / Sauce	Salad bar Jacked Potatoes Bread Rolls / baguette Pasta / Sauce	Salad bar Jacked Potatoes Bread Rolls / baguette Pasta / Sauce

Lessons

- Our summer school is accredited by British Council
- Take place at King Alfred Campus
- 8 classrooms
- **Courses available:** General Course (15 x 45 minutes per week), Intensive Course (20 x 45 minutes per week). One-to-One lessons available upon request.
- **Trinity Oral Examination** available (to be booked in advance, please book Intensive Course for preparation). **Exam dates: 13th July, 27th July, 10th August 2012**
- **Levels:** Lower Intermediate (A2), Intermediate (B1), Upper Intermediate (B2), and Advanced (C1)
- **Placement Test** on the 1st day at 9.00, class allocation at 11.00
- Teaching material provided
- **IP Certificate** at the end of the course
- Our courses follow the European Framework of Reference Levels
- No more than **15 students** are in a group. Generally, these students are nearly the same age and speak different native languages
- **90 % of our teachers are native speakers** and a maximum of 10 % are native level speakers. All of our teachers are qualified, which means either a TEFL qualification or a teaching qualification (PGCE Primary / PGCE Secondary for Modern Languages).
- **Lesson times:** 1st lesson: 9.00-9.45; 2nd lesson: 9.45-10.30; Break: 10.30-11.00; 3rd lesson: 11.00-11.45; 4th lesson: 11.45-12.30



Supervision

Our friendly and helpful **International Team** with staff members from England, Germany, France, Spain, Russia and other countries will run a fully supervised activity programme and guarantee supervision. Our supervision ratio depends on the age range of students: for students 12 and younger we follow a ratio of 1:10, for the age group 13 and older we follow the ratio of 1:15. The members of our team have been carefully selected for their responsible and caring attitude, as well as their fun-loving and outgoing personalities. They are the people your students can turn to at any time for assistance.

learn more than a language

international
projects **ip**
language courses abroad

Our members of staff have been trained in three different sessions totalling ten days of intense preparation for their summer job.

international
projects **ip**
language courses abroad

offaehrte
sprachreisen

europa
school of english

celf centre d'enseignement
de langues en france

IP International Projects
Martinistrasse 60
28195 Bremen
Germany

Phone: ++49-421-792 58 30
Fax: ++49-421-792 58 20
info@internationalprojects.com
www.internationalprojects.com

Sample Programme

We offer an exciting and supervise activity programme during the afternoons & evenings, 7 days a week.

	MONDAY	TUESDAY	WEDNESDAY	THURSDAY	FRIDAY	SATURDAY	SUNDAY	
MORNING	Breakfast	Breakfast	Breakfast	Breakfast	Breakfast	Breakfast	Breakfast	
	9.00-10.30 Lessons	9.00-10.30 Lessons	9.00-10.30 Lessons	9.00-10.30 Lessons	9.00-10.30 Lessons			
	10.30 IP Ocean Lounge							
	11.00 Lessons	11.00 Lessons	11.00 Lessons	11.00 Lessons	11.00 Lessons			
	12.30 Assembly							
	Lunch	Lunch	Lunch	Lunch	Lunch	Lunch	Lunch	
AFTERNOON	14.00-17.00 News Workshops with photography, research in regards to your summer centre, writing articles, publishing IP Times* Arts and Crafts (origami, bracelets, design cards/masks, face-paint), Dance, Health and Beauty, Scavengers hunt, Open Stage Preparation Optional activities with supplement on offer On demand: cultural activities					14.00 Welcome Meeting	14.00-17.00 Fun Games	
	STUDENTS CAN CHOOSE BETWEEN SEVERAL ACTIVITIES AVAILABLE	14.00-17.00 Sports (Softball, Volleyball, Basketball, Football, Sports Tournaments) Optional activities with supplement (bowling, tennis, minigolf)				15.00 London Preparation	15.00 Farewell Meeting	14.00-17.00 Town Walk & Campus Rally
		14.00-17.00 IP Ocean Lounge						
		TTT	TTT	TTT	TTT	TTT		
		Dinner	Dinner	Dinner	Dinner	Dinner	Dinner	Dinner
EVENING	19.30-22.00 Welcome Party	19.30-22.00 Theme Night	19.30-22.00 Treasure Hunt	19.30-22.00 Open Stage	19.30-22.00 IP Party	19.30-22.00 Quiz Night	19.30-22.00 Film Night	
TRIPS 2 HD-TRIPS AND 1FD-TRIP INCLUDED PER FORTNIGHT.		14.00-18.00 Salisbury or Bournemouth		14.00-18.00 New Forrest or Portsmouth		8.30-21.30 London or 08.30-18.00 Brighton	8.30-21.30 London or 8.30-18.00 Oxford	

TTT (Time To Talk): Students meet their personal supervisor

* Students will be allocated to different workshop groups, students might need to decide for one topic (only certain amounts of cameras available).

Trip Programme

2 Half-Day Trips and 1 Full-Day Trip included per fortnight. Additional trips can be booked in the centre. Entrance fees are not included for excursions!

Full-Day: London

If you travel to England, you simply have to see London! We try to get as much as possible out of our day in this fascinating city. We leave Winchester around 0830h and after a short stop at Heathrow Airport we'll arrive in the city centre of London at about 1100h. During our guided tour we will pass Trafalgar Square, The Mall, Buckingham Palace, Birdcage Walk, Houses of Parliament, Big Ben, Westminster Abbey, London Eye, and Piccadilly Circus (entrance fees are not included).

After our tour it's shopping time! Shopping is not supervised and is only permitted in groups with minimum of 3 students. Our shopping venues include Oxford Street, Regent Street, and Carnaby Street.

Alternatively, you may choose to visit the Hard Rock Café or the famous Covent Garden. At Covent Garden you will have the opportunity to watch a variety of street artists and jugglers.

As you may notice, the possibilities are endless, and you will have a difficult time deciding how to spend your one magnificent day in London. At about 1800h we will leave London; tired after an exciting day, but with countless memories to look back on. When we return to the centre around 1930h we will definitely be ready for a good night's sleep!

Full-Day: Brighton

Brighton is without a doubt Britain's most popular seaside resort offering some of the best shopping outside of London! It has become one of the most fashionable and vibrant cities in the UK. Our sightseeing walk will take us past the famous Piers and the Royal Pavilion (entrance fees not included). These have been major attractions for decades, as well as the famous Lanes Shopping Quarter. Departure for Brighton is at approximately 0830h, and we will arrive back in Winchester in time for dinner at 1800h.

Full-Day: Oxford

Oxford, "The City of Dreaming Spires", is world famous for its university and contribution to history. For over 800 years it has been a home to royalty and scholars. Nowadays, the city is a bustling cosmopolitan town. Oxford is still known for its famous university, but it is also home to a growing high-tech community. Its mix of ancient and modern factors means there is plenty to do. Whether it is visiting one of the many historic buildings, colleges, museums, or shopping till you drop, Oxford has it all! We will leave Winchester around 0830h and arrive in Oxford approximately 1.5 hours later. After an exciting full day trip we will be back in Winchester for dinner.

Half-Day: Salisbury

Salisbury is most famous for its cathedral, enclosed within a magnificent medieval city; it is described as the most beautiful cathedral in England. During this half-day excursion we take a walk through town, passing the cathedral (entrance not included) and taking a look at the ancient buildings. After our walk you are free to spend time shopping or exploring Salisbury's history. We will leave for Salisbury around 1400h and be back in time for dinner.

Half-Day: Bournemouth

Bournemouth is famous for its 7 miles of sandy beaches that run from Hengistbury Head in the east, to Sandbanks, Poole, in the west. You may spend your time at the beach, (which has been awarded for its cleanliness and water quality) or go shopping in Bournemouth's town centre. We will leave for this half day trip around 1400h and be back at the centre for dinner.

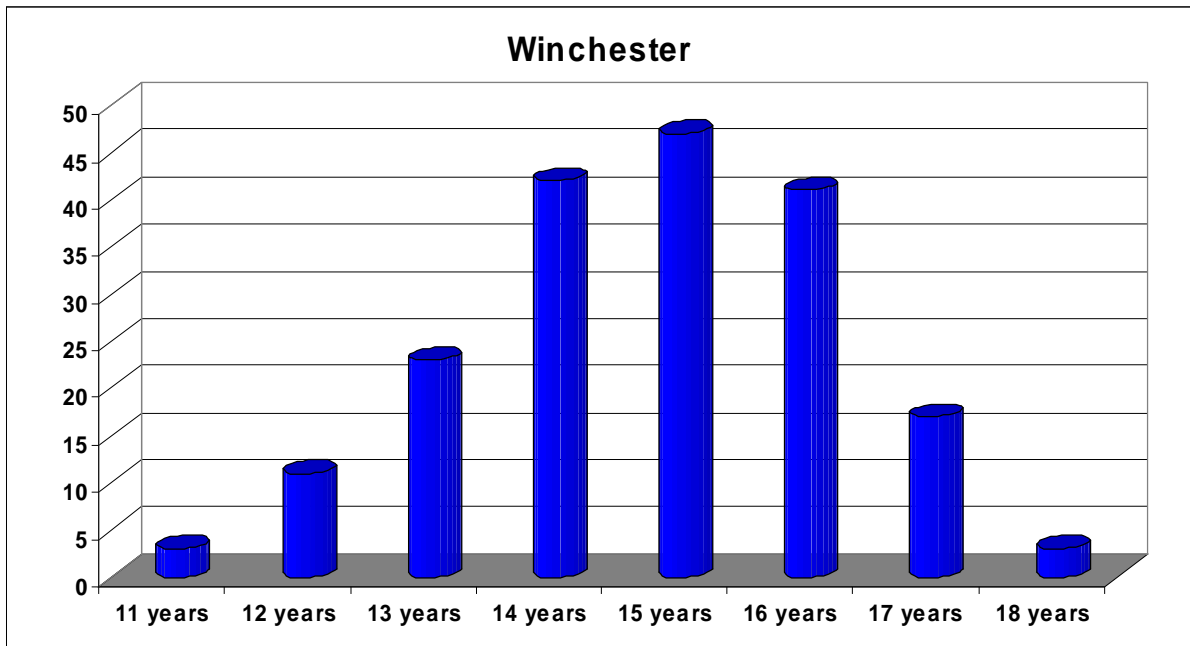
Half-Day: Portsmouth

Portsmouth is home to the world's oldest dry dock that is still in use, and to many famous ships, including Nelson's famous flagship HMS Victory. Portsmouth's military activity has declined in recent years, but it still remains a major dockyard and base for the Royal Navy. There is a lot to discover on our excursion to Portsmouth, e.g. the D-Day museum, the Royal Naval Museum, or the Spinnaker Tower at Gunwharf Quays (no entrance fees included). We will depart for Portsmouth at around 1400h and be back in time for dinner.

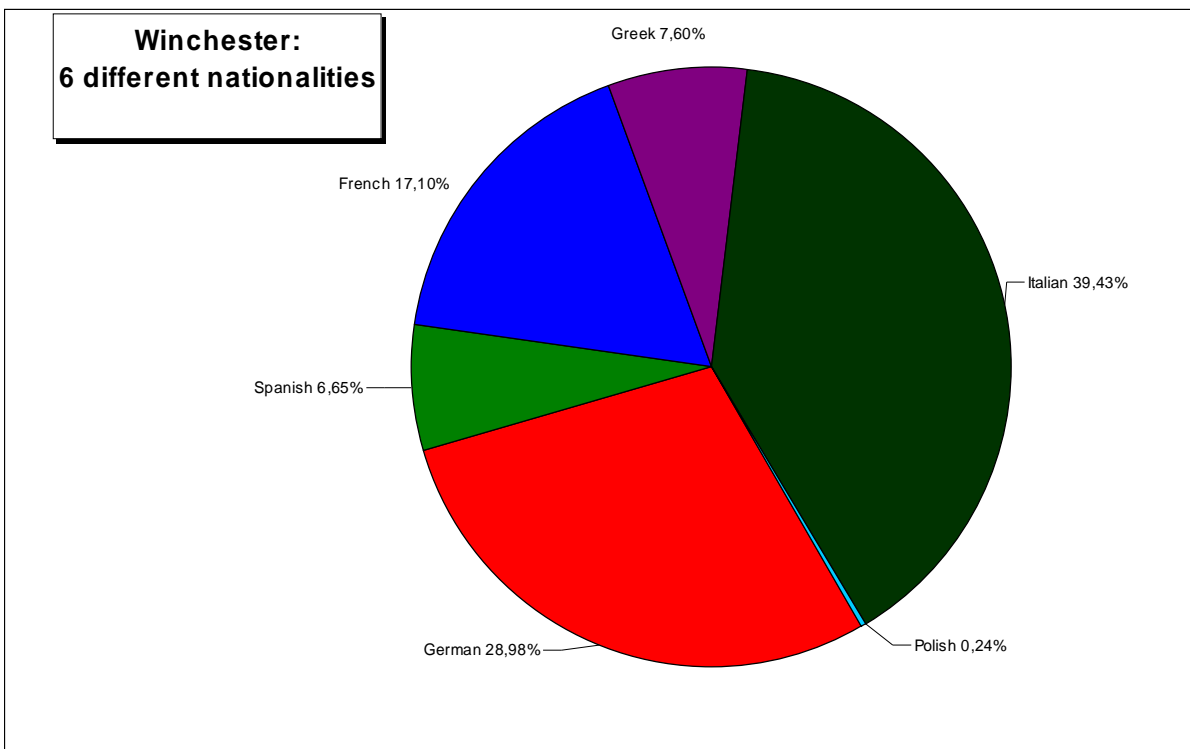
Half-Day: New Forest

The New Forest is a beautifully preserved corner of the English countryside planted over 1000 years ago. It was set aside by William the Conqueror as royal hunting grounds. Little of the countryside has changed over the years, and the forest towns and villages still retain a charm all of their own. Famous for its wild ponies, there are also over 1,500 fallow deer; as well as red, sika, and roe deer. A stop in Lyndhurst will allow us to explore the little market town with its various shopping facilities. Departure in the centre will be around 1400h and we will be back in time for dinner.

Students 2011 – Age



Students 2011 – Nationalities



International Projects' Rules and Regulations for Students

Alcohol and Drugs The consumption of alcohol and drugs is strictly forbidden. Law prohibits young adults under the age of 18 from buying or consuming alcohol in the UK.

Pubs, Discos, and Amusements Young adults under the age of 16 are not allowed to enter pubs in the UK. Students 16 years of age are permitted in a pub until 21.30, but are only able to buy and consume soft drinks. Visiting pubs is only advisable if you are accompanied by a member of staff, group leader, or home stay host. Discos / Nightclubs and amusement arcades are strictly out of bounds for all students under 18 years of age.

Smoking It is illegal for young adults under the age of 18 to buy and smoke cigarettes at all destinations.

Theft Shoplifters and thieves are prosecuted in the UK, irrespective of the value of the stolen article.

Weapons and Dangerous Articles All weapons (including flick-knives) are forbidden. CS gas is also illegal.

Fire Extinguishers Fire extinguishers are located throughout the centres and their buildings. These are for emergency use only. If a fire extinguisher is tampered with in ANY way, students will be fined for its misuse.

- **Going Out** Students are allowed to go out in the evenings in groups with a minimum of 3 students pending the Centre Manager's permission. They must adhere to the following laws and be back in the residence or with their private host by: Ages 13 & 14: 22h00, 15 & older: 24h00. If you are going to be late please call your host or centre office in order to ensure that we know where you are and do not have to look for you. The above times do not apply when students are involved in an organised evening activity. **This rule does not apply to students under the age of 13 since they have to be supervised at all times.**
- **Leaving the Campus / College grounds/ Arranging their own excursion** Students under the age of 17 are not allowed to leave the destination town or village unless they are accompanied by a member of staff.

Doors Entrance doors to the residences **must not** be kept open. This is for your own safety. Theft can, and does occur. Careless security on your part will place you and your belongings at risk.

Compulsory Activities All lessons along with the daily morning assembly must be attended.

Damage Incidences of damage to property and buildings caused by misuse or vandalism will be dealt with severely. Students will have to pay for ALL damages.

Private Doors which are marked with signs that state "private" are not to be opened. Some private areas will be unlocked for fire safety reasons, but entrance is still forbidden.

Noise Students are asked to respect those around them, and keep noise to a minimum when returning to residences or private homes late in the evening. Social areas in the residences may be used after the evening activity finishes, but students should be in their rooms by 23.00. Students are not to congregate outside residences late in the evening. Many centres are situated in residential areas – please be considerate of those who live close by.

Mobiles The use of mobile telephones during lesson time is strictly prohibited. Failure to comply with this may result in staff confiscating your mobile phone. IP staff does not accept any responsibility for the loss of or damage to mobile phones.

Swimming Swimming in the sea is allowed on the condition that your parents have not specified otherwise. Swimming in the sea is not an organised IP activity, and therefore IP staff cannot be held responsible for student safety. Swimming in the sea when the red flag is flying is absolutely forbidden.

Internationalism International Projects' aim is to bring young people from all over the world together in an environment where they can meet friends and have fun. Racist or sexist behaviour towards other students will not be tolerated.

Parental Permission

We guarantee that our qualified staff will supervise all elements of the IP programme. However, some of the additional activities such as: diving, sailing, surfing, riding a bike, and horse riding we work with local providers, and require your permission for your child to take part in these activities. The same applies for activities undertaken by your son/daughter on their own outside of the IP Programme.

Please complete the form below in order to stop your child from taking part in the following activities:

- My son/daughter is allowed to be in town on his / her own after(please specify).
- My son/daughter is allowed to swim in the sea at her / his own risk.
- In case of hospitalisation, I authorize the legal representative of IP to take all necessary decisions (medical treatments, hospitalisation, surgery) regarding my child in respect of the medical report and will reimburse all medical expenses that could possibly be engaged by IP for my child.

I, THE UNDERSIGNED.....(First name).....(Surname)

PARENT OR LEGAL GUARDIAN OF:

First name..... Surname.....

Date of birth.....

Staying in Arrival Date:

I do not want my child to take part in the activities mentioned in point 1 to 3 (please ignore if not applicable)

DATE:.....SIGNATURE:

PLEASE NOTE: THIS AUTHORIZATION HAS TO BE RETURNED TO THE IP OFFICE IN BREMEN ONE WEEK BEFORE ARRIVAL.

If the Parental Permission form is not returned, IP assumes that the parents agree to the set standards and procedures which govern our language holidays and are based on the laws of the destination country.