

learn more than a language



Junior Summer Courses in Exeter 10-15 & 16-17 years



Why Exeter?

- Exeter is the capital of the beautiful county Devon, with good shopping opportunities
- Typical English university campus – University of the Year 2013
- Campus close to the city centre
- 7-day activity programme
- In 2018 up to 11 nationalities

Accredited by the

for the teaching
of English in the UK

ENGLISHUK
member

General Information

- Distance to city centre
1.2 km, 15 minute walk
- Distance to London
267 km
- Main Airports:
 - Exeter (20 minutes)
 - Bristol (1.5 hours)
 - London (4.5 hours)
- Tourist attractions:
 - Bath
 - Jurassic Coast
 - Exmouth Beach
 - London
 - St. Ives (Cornwall)
 - Tintagel and Padstow
 - Cardiff
 - Totnes
- Half and full day trips included

learn more than a language



Accommodation & Facilities

- Residential single rooms with shared or private bathroom, full-board
- Self-contained campus with modern classrooms in the campus' main buildings (15 mins walking distance from accommodation/IP Ocean)
- IP Ocean Lounge: meeting point and social space for our students
- Large dining hall
- Outdoor heated swimming pool (reserved once a week)
- Internet access on campus
- Campus not accessible for disabled students



| Quick check | |
|-----------------------------------|---|
| Ages | 10-15 and 16-17 years |
| Centre Type | University campus on-site |
| Courses available | -General English (15x45 min/11.25 hrs) -Intensive English (20x45 min/15 hrs) -Mini-Group (20x45 min/15 hrs) |
| Capacity | Max 300 Residential |
| Main arrival/departure day | Saturday |
| Centre dates | 29.06.2019 - 17.08.2019 |
| Nationality Mix 2018 | German, Italian, Spanish, Saudi Arabian, Russian, Romanian |
| Specials | London Overnight Trip Special Fun Day |



Airports and Airport Transfers

- Bournemouth Airport:
142 km, ca. 2.5 hours, airport transfer with private coach or taxi at any time requested
- Southampton Airport:
180 km, ca. 3 hours; airport transfer with private coach or taxi at any time requested
- Bristol Airport:
116 km, ca. 2 hours; airport transfer with private coach or taxi at any time requested
- London Gatwick:
295 km, ca. 4.5 hours; airport transfer with private coach or taxi at any time requested
- London Luton:
341 km, ca. 5 hours; airport transfer with private coach or taxi at any time requested
- London Stansted:
402 km, ca. 5 hours; airport transfer with private coach or taxi at any time requested
- London Heathrow: 296 km, ca. 4 hours; airport transfer with private coach or taxi at any time requested

Low Cost Transfer from Heathrow: For all UK centres we offer on Saturday a low budget transfer from/to London Heathrow. This requires flight arrival at London Heathrow Airport before 16:30 (**for non-European students we recommend arriving before 15:00**). On the day of arrival our Meet & Greet Service will be waiting for your students at their arrival terminal and accompany them to the meeting point for all students and then to the transfer service. Our coach shuttle will depart from Heathrow or a nearby pick up Service station at approximately 18:00 to leave to the course centres.

On the day of departure the students will depart early in the morning from the course centre and will be dropped-off at Heathrow between 11:00 – 12:00 - so please book the departing flight after 14:00. A staff member will help the students to their respective terminal and assists with the check in until 17:30. For all later departures there might be a supplement.

Please note:

If flight arrival is before 13:00 we urgently recommend a private transfer to avoid long waiting times. Departing flights should be before 17:00 otherwise we also recommend a taxi transfer.

If you do not make it on time to the coach shuttle on arrival, e.g. because your flight is delayed, border control takes too long, etc., there might be a supplement.

Individual Transfer

Transfers will be done by our well-known taxi and transfer companies with DBS checked drivers. On the day of arrival our Meet & Greet Service will be waiting for the students at the exit area of customs with a sign of either the students' name/s or our company name on it and will take them directly to their course centre. On the day of departure, the students will leave the centre as required in order to make sure they arrive at the airport in time to check in. For students' safety, we assist them with the check-in for their flight.

Unaccompanied Minor Service

Please keep in mind that a return UM-service must be booked if your student uses the UM-service on arrival/departure (supplement).

Accommodation and Catering

Residential Accommodation – Streatham Campus ‘Birks Grange Village’

The residential facilities comprise modern study blocks situated on the edge of Streatham campus. Not far from the accommodation blocks there is the IP Ocean lounge and the refectory.

The accommodation blocks are located on the edge of the Streatham Campus, within easy reach of activities, lessons and meals.

General information

- 1 key/fob per person (in case of loss 25 GBP/please bring a lanyard keychain)
- Bedding: Provided and changed weekly
- Towels: **not** provided
- No cookers available; fridges can be used in all common rooms (IP staff have a fridge for medical use, etc.)
- Deep clean of rooms and washrooms once a week, light clean daily
- Laundry self-service on campus (Cornwall House): £2.50 per washing machine, £1.30 per dryer
- Free WIFI internet access in all rooms
- Adapter: if needed, can be purchased in the IP shop (approx. 3 GBP)

Birks Grange: single rooms with private bathroom

- 8 rooms per apartment
- All rooms have a private bathroom
- 1 kitchenette per apartment (not equipped, cooking not possible) which can be used as common room
- Beds, wardrobe, desk and chair in all rooms
- Big wardrobe / not lockable
- Floor: carpet
- Lockable rooms, normally one key per student
- Room size: approx. 4x2,4 meter

Birks Grange: single rooms with shared bathroom

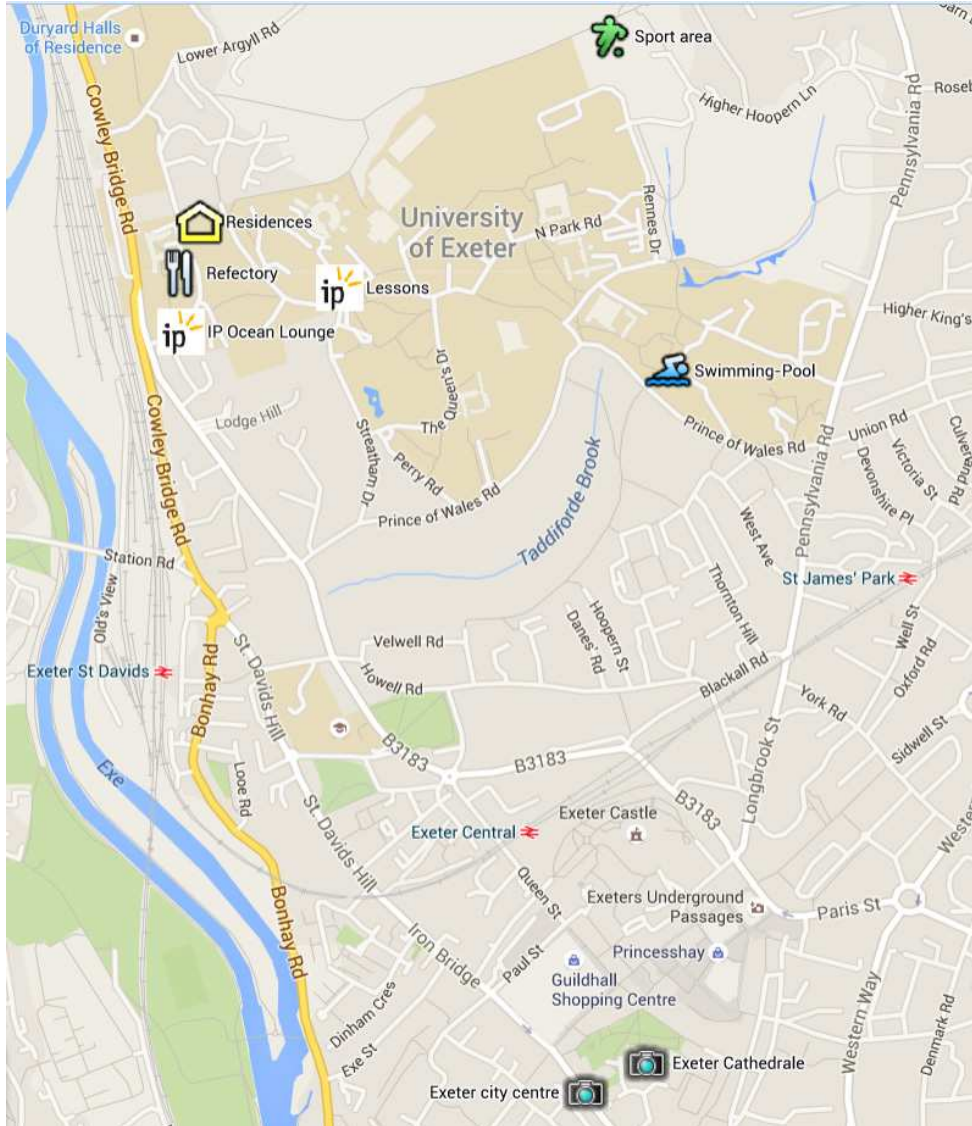
- 3 Floors with 4 rooms per floor (12 students share 6 bathrooms/toilets)
- Single standard rooms
- Single beds, wardrobe, desk and chair in all rooms
- Floor: carpet
- Lockable rooms, normally one key per student
- Room size: approx. 4 x 2,4 meter

Meal plan

- Meal times: breakfast 7:30-8:30, lunch 12:30-13:15, dinner 18:00-19:00
- We cater for vegetarians and special diets e.g. gluten free, lactose free and halal

learn more than a language

Campus Map Exeter



Lessons

- Our summer school is accredited by the British Council and ISI
- Modern equipped classrooms at the IP School
- Courses available:
 - **General English Course** (15x45 minutes/11.25 hours per week), (A1-C1), 9:00-11:45 including breaks
 - **Intensive English Course** (20x45 minutes/15 hours per week), (A1-C1), 9:00-12:30 including breaks
 - **Mini-Group** (20x45 minutes/15 hours per week), (A2-C1), 9:00-12:30 including breaks. Max. 6 students in one group.
- All our courses follow the European Framework of Reference Levels for Language Learning
- **Levels:** Beginner (A1), Elementary (A2), Pre-Intermediate (B1), Upper Intermediate (B2), and Advanced (C1)

learn more than a language

- **Placement Test:** on the 1st day of class at 9:00, class allocation on Tuesday
- Teaching material provided
- **IP Certificate** at the end of the course
- No more than **15 students (Mini-Group: max. 6 students)** are assigned per group. Generally students' native languages vary, but they are of similar age.
- **70 % of our teachers are native speakers** and a maximum of 30 % are native level speakers. All of our teachers are qualified to teach English as a Foreign Language, which means they have either a TEFL qualification or a teaching qualification (PGCE Primary / PGCE Secondary for Modern Languages).



Specials (with supplement)

London Overnight Trip (minimum age: 13 years)

London is considered the largest city, urban zone and metropolitan area in United Kingdom. Being a leading global city which has important strengths in arts, commerce and tourism among others, it has been described as the world cultural capital. During this trip, we want our students to discover one of the most important cities in England, finding cultural curiosities and the most important places which make this city the highlight of the area and the country.

The coach to London will leave the course centre on Saturday morning after breakfast and arrive in central London about lunch time.

During our guided tour we will see many of the important icons of the city, starting with a nice walk from the gallery Tate Britain through the city learning important facts and lovely stories from all the well-known places such as the London Eye, the Houses of Parliament and Big Ben, as well as Westminster Abbey. Then heading to Buckingham Palace and all the gardens surrounding this great icon of London. Many other important places will be visited, such as St. James's Palace, Trafalgar Square, the Horse Guards and Downing Street, amongst others (possible entrance fees are not included).

After our tour the students will have spare time to enjoy other places and parts of the city or to go shopping (Oxford-, Regent and Carnaby Street).

learn more than a language

You will spend the night in a youth hostel and have some more time for shopping and sightseeing the next day. You will be back in Exeter on Sunday evening. On the first day you will have breakfast in your centre, will be provided with a packed lunch and get a warm dinner in London (most likely pizza). On day 2 you will have breakfast at the hostel, a packed lunch and a cold packed dinner back at your course centre. On all weekends we hire exclusively for our students a VIP Party Bus for 2 hours going around London. The bus will collect everyone at 20:00 at the hostel. Soft drinks will be provided but there are no snacks included.

Minimum number for the Party Bus is 15 students. In case of fewer students an alternative programme will be offered.

London Stopover (for groups only)

For closed groups we offer a Stopover in London at arrival or departure for one or two nights. Accommodation is provided in a youth hostel, full board (half board upon request only), tube tickets and of course transfer from or to the Airport are included as well. The group will be assisted by a member of IP staff during their stay. There will be a guided tour for the group passing the main sights such as Trafalgar Square, The Mall, Buckingham Palace, Big Ben, the Houses of Parliament, Westminster Abbey.... (**entrance fees are not included**). Of course we are happy to pre-book any London attraction such as the London Eye or Madame Tussauds for you (at extra cost) prior to arrival of the group.

For more detailed information about the London Stopover on arrival or departure, please do not hesitate to contact us.

Special Fun day

Full day Excursion to Splashdown Waterpark in Paignton (on Sundays) from 08:00-20:00/21:00

Splashdown is the UK's biggest outdoor waterpark. The site has 8 water slides, small splash pools for youngsters and a swimming pool. Students spend a great day out full of fun. They leave the centre in the morning, spend there a day full of fun and get back in the evening.

Supervision

Our friendly and helpful **International Team** will run a supervised activity programme and guarantee supervision. They have been trained intensely to get prepared for their summer job. Our supervision ratio is based on age groups, for the age group 13 and older we follow a ratio of 1:15, for students 12 and younger 1:10.

Students under the age of 13 are supervised more thoroughly by specially trained staff members.

The activity programme is mandatory for you and your supervisors will ensure that you take part in the offered activities. You are not allowed to leave the campus without supervision, but we will offer town walks almost every day. It is not possible for your parents to give you permission to leave the campus on your own. The supervision ratio for this age-group is 1:10 to guarantee the safety and well-being of our younger students.

Teenagers aged 13 to 15 participate in a compulsory programme with a wide range of activities. You are not allowed to leave the campus without staff members – even if your parents give you permission to do so. Our staff members accompany you into town and/or to the beach. You will have the opportunity to explore the city centre and/or the beach on your own in pairs or bigger groups for a certain amount of time. From the meeting point in the city centre, your staff members will take you back to the campus. Those of you who are staying in homestay will make your way independently to the campus and back to your hosts. In general, we adhere to the official supervision ratio of 1:15. The programme is mandatory for you in this age group and you can choose from the various options.

learn more than a language

Teenagers aged 16 or 17 are free to experience and explore things with their friends in pairs or bigger groups on and off campus. Our supervisors provide a good mix of supervision and personal freedom for this age group. Participation in the afternoon and evening activity programme is voluntary for students over the age of 16. You can choose between taking part in the offered programme activities or exploring the town with your friends in pairs or bigger groups in the afternoon after informing our staff members and signing out. You will not be allowed to leave the campus without supervision after dinner, but there can be special supervised programme activities off the campus for you. If you don't want to take part in the evening programme, you can choose to stay in the residence from time to time where a staff member will be around to make sure that everything is all right. The supervision ratio for this age group is 1:15.

Our supervisors may restrict the level of freedom if necessary, for example if you don't follow our centre rules!

If students travel in a closed group, the accompanying group leader is responsible for their supervision in line with our supervision policies and procedures and working alongside our team. The group leader will be fully integrated into our teams and all the rules and regulations and policies will be communicated to them prior to arrival in our centres. Our teams do very much appreciate any active support from the group leaders on site.



learn more than a language

Sample Social Programme

IP Exeter - an international melting pot

| | Saturday | Sunday | Monday | Tuesday | Wednesday | Thursday | Friday |
|--|--|--|---|--|---|--|---|
| | 7:30 - 9:00 BREAKFAST | 7:45 - 8:45 BREAKFAST | 7:45 - 08:45 BREAKFAST | 7:45 - 08:45 BREAKFAST | 7:45 - 08:45 BREAKFAST | 7:45 - 08:45 BREAKFAST | 7:45 - 08:45 BREAKFAST |
| MORNING | 9:00 - 12:00 OCEAN CHILL-OUT WORKSHOP SPORTS | 9:00 - 12:00 OCEAN CHILL-OUT WORKSHOP SPORTS | 9:00 - 10:30 PRELIMINARY TEST / LESSONS | 9:00 - 10:30 LESSONS | 9:00 - 10:30 LESSONS | 9:00 - 10:30 LESSONS | 9:00 - 10:30 LESSONS |
| | | | BREAK - OCEAN | BREAK - OCEAN | BREAK - OCEAN | BREAK - OCEAN | BREAK - OCEAN |
| | | | 11:00 - 11:45 LESSONS | 11:00 - 11:45 LESSONS | 11:00 - 11:45 LESSONS | 11:00 - 11:45 LESSONS | 11:00 - 11:45 LESSONS |
| | | | 11:45 - 12:30 INTENSIVE COURSE | 11:45 - 12:30 INTENSIVE COURSE | 11:45 - 12:30 INTENSIVE COURSE | 11:45 - 12:30 INTENSIVE COURSE | 11:45 - 12:30 INTENSIVE COURSE |
| | 12:30 - 13:30 LUNCH | 12:30 - 13:30 LUNCH | 12:30 - 13:30 LUNCH | 12:30 - 13:30 LUNCH | 12:30 - 13:30 LUNCH | 12:30 - 13:30 LUNCH | 12:30 - 13:30 LUNCH |
| 13:30 - 14:00 WELCOME MEETING* + TTT | 13:30 - 14:00 ASSEMBLY + TTT | 13:30 - 14:00 ASSEMBLY + TTT | 13:30 - 14:00 ASSEMBLY + TTT | 13:30 - 14:00 ASSEMBLY + TTT | 13:30 - 14:00 ASSEMBLY + TTT | 13:30 - 14:00 ASSEMBLY + TTT | |
| AFTERNOON | 14:00 - 17:00 TOWN WALK SPORTS HALL WORKSHOP OCEAN CHILL-OUT | 14:00-17:00 TOWN WALK RIVER HARBOUR WORKSHOP OCEAN CHILL-OUT | 14:00 - 17:00 TOWN WALK JOGGING WORKSHOP OCEAN CHILL-OUT | 14:00-17:00 TOWN WALK OUTDOOR SPORTS WORKSHOP OCEAN CHILL-OUT | 14:00-17:00 TOWN WALK DANCING WORKSHOP OCEAN CHILL-OUT | 14:00 - 17:00 TOWN WALK SPORTS HALL WORKSHOP OCEAN CHILL-OUT | 14:00 - 17:00 GRADUATION TOWN WALK WORKSHOP OCEAN CHILL-OUT LONDON PREP |
| EVENING | 18:00 - 19:00 DINNER | 18:00 - 19:00 DINNER | 18:00 - 19:00 DINNER | 18:00 - 19:00 DINNER | 18:00 - 19:00 DINNER | 18:00 - 19:00 DINNER | 18:00 - 19:00 DINNER |
| | 19:00 - 19:15 TTT (TIME TO TALK) | 19:00 - 19:15 TTT (TIME TO TALK) | 19:00 - 19:15 TTT (TIME TO TALK) | 19:00 - 19:15 TTT (TIME TO TALK) | 19:00 - 19:15 TTT (TIME TO TALK) | 19:00 - 19:15 TTT (TIME TO TALK) | 19:00 - 19:15 TTT (TIME TO TALK) |
| | 20:00 - 22:00 CINEMA NIGHT (MOVIE CHOICE) | 20:00 - 22:00 BEAT THE SUPERVISORS GAMES NIGHT | 20:00 - 22:00 WELCOME PARTY PUB | 20:00 - 22:00 THEME NIGHT QUIZ NIGHT | 20:00 - 22:00 OUTDOOR NIGHT (OPTIONS) | 20:00 - 22:00 IP'S GOT TALENT | 20:00 - 22:00 FAREWELL PARTY KARAOKE |
| NIGHT | NIGHT CHECK | NIGHT CHECK | NIGHT CHECK | NIGHT CHECK | NIGHT CHECK | NIGHT CHECK | NIGHT CHECK |
| | 22:00 - 07:30 PEACE AND QUIET | 22:00 - 07:30 PEACE AND QUIET | 22:00 - 07:30 PEACE AND QUIET | 22:00 - 07:30 PEACE AND QUIET | 22:00 - 07:30 PEACE AND QUIET | 22:00 - 07:30 PEACE AND QUIET | 22:00 - 07:30 PEACE AND QUIET |
| SPECIAL | | | | OUTDOOR SPECIAL | OUTDOOR SPECIAL | | OUTDOOR SPECIAL |
| TRIPS | FD TRIP** LONDON OR PLYMOUTH OR CORNWALL ST. IVES OR BATH OR CARDIFF OR GLASTONBURY OR BRISTOL OR TINTAGEL | FD TRIP** LONDON OR PLYMOUTH OR CORNWALL ST. IVES OR BATH OR CARDIFF OR GLASTONBURY OR BRISTOL OR TINTAGEL | | HD TRIP EXMOUTH OR TORQUAY OR LYME REGIS (AT JURASSIC COAST) OR DARTMOOR OR TOTNES OR LYNTON | | HD TRIP EXMOUTH OR TORQUAY OR LYME REGIS (AT JURASSIC COAST) OR DARTMOOR OR TOTNES OR LYNTON | |

* Due to different arrival and departure dates and times there will be several Welcome Meetings throughout the weekend.

**Several full day trips might be on offer and take place on Saturdays and Sundays. The exact times will be communicated in the centre.

learn more than a language

Sample Excursions

Full day trip to London ca. 07:00-22/23:00

During our guided tour we will pass Trafalgar Square, The Mall, Buckingham Palace, St James Park, Birdcage Walk, the Houses of Parliament, Big Ben, Westminster Abbey, London Eye, and Piccadilly Circus (entrance fees are not included). After our tour it's shopping time (Oxford-, Regent and Carnaby Street). In this full day trip they will have packed breakfast and lunch, with late (packed) dinner once they get in the centers.

Full day trip Plymouth ca. 07:30-18:00

Once we arrived in Plymouth we will take you on a guided walk along the vibrant waterfront to the lighthouse where we will have lunch. Afterwards we make our way to the city centre where you have enough time to do some shopping.

Full day trip to Bath ca. 07:30-18:00

After a guided tour around the city your free time may be spent for shopping or visiting place of interest like Roman Bath & Pump Room, Pulteney Bridge, Bath Abbey, or the Royal Crescent (**entrance fees not included**).

Full day trip to Cornwall, St. Ives ca. 07:30-18:00

St. Ives is world famous for its art centre, studios, shops, and galleries all over town. After a short guided tour, there will be time to visit the Tate St Ives Museum (entrance fee not included) or spend time at one of the lovely beaches.

Full day trip to Glastonbury & Tor ca. 07:30-18:00

Glastonbury is famous for magic places, and legends about religions and King Arthur. Dropping off at the Abbey, the students will have a nice walk discovering all the enchanted places full of magic and history, as well as some amazing buildings, churches and of course, the famous Glastonbury Tor, on the top of a hill where they will enjoy the amazing views of the mid-Somerset area, including the Levels which are drained marshland, while enjoying the stories and legends our lovely supervisors will tell them.

Full day trip to Cardiff ca. 7:30-18:00

Cardiff is the capital of Wales. The guided sightseeing walk in the city takes us to the National Museum (admission free), The City Hall, St Johns' Church (admission free) and the amazing Cardiff Castle (entrance only with supplement), built as a wooden-motte-and-bailey castle by the Normans and rebuilt in stone on the 12th century. After that, there will be spare time for shopping in St. David's Dewi Sant, Cardiff Market, Queens Arcade, Queens Street).

Full day trip to Bristol ca. 7:30-18:00

Located in the South West, Bristol is England's sixth and the United Kingdom's eighth most populous city, and the most populous city in Southern England after London. We offer a guided tour visiting The Bristol Old Vic, Bristol Cathedral, Bristol City Museum and the city center among other amazing spots of the towns. A spare time is offered to do some shopping, visiting some interesting cultural sites such as the surviving Bristol Byzantine buildings and Bristol Zoo.

Full day trip to Tintagel and Padstow ca. 7:30-18:00

Tintagel is a village situated on the Atlantic coast of Cornwall, the modern-day village of Tintagel was known as Trevena ('place of the women'). We offer a guided tour to King Arthur's Great Halls, Aelnet's Cross, Tintagel Old Post Office, Barras Nose and Tintagel Castle (entrance with supplement). Afterwards, we go to the town of Padstow, situated on the west bank of the River Camel estuary. We start our tour by visiting the Church of St Petroc and Padstow Museum. Spare time in both towns is granted for shopping, sightseeing and pictures.

learn more than a language

Half-day trip to Exmouth ca.13:30-18:00

After a short walk through the small seaside town passing various churches and the clock tower, you can enjoy your time at the beach or rummaging through the shops and cafes in the town centre.

Half-day trip to Torquay ca.13:30-18:00

The trip begins with a short-guided tour along the famous "Rock Walk" to the Pavilion, followed by some spare time for shopping.

Half-day trip to Totnes ca. 13:30-18:00

We will do a historic walk around Totnes including Totnes Castle, the Ramparts Wall and the Guildhall (entrance fees not included). After the guided tour there will be spare time to visit one of the museums (entrance fees not included) or wander around the small town and explore the narrow streets.

Half-day trip to Dartmoor ca.13:30-18:00

After a spectacular drive through some typical Dartmoor scenery, with sheep and original Dartmoor ponies, we will stop at the Hound Tor, where we will walk around granite outcrops. Our second highlight will be the village Widecombe-in-the-Moor, with its church and tiny souvenir shops.

Half-day trip to Lyme Regis (at Jurassic Coast) ca. 13:30-19:30

This trip will lead us to the western part of the Jurassic coast. We will walk through Lyme Regis to the 'Cobb' and have a look at fossils on our way. After that there will be some time to enjoy the sandy beach. Packed dinner will be ordered instead of normal dinner.

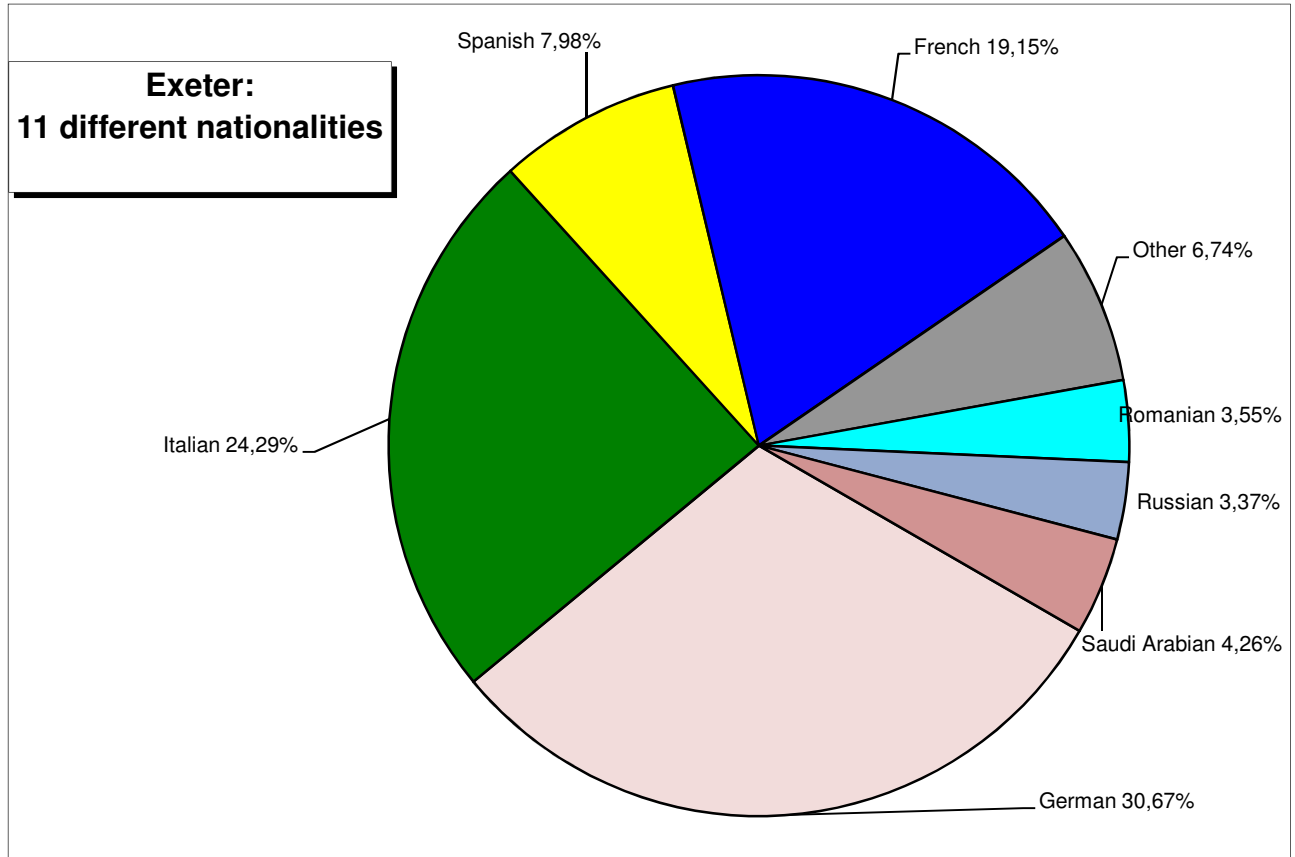
Half-day trip to Lynton and Lynmouth ca.13:00-19:30

Lynton and Lynmouth offer a unique experience for all, situated on the North Coast of Devon known for its high sea cliffs, within the Exmoor National Park noted for its breathtaking natural beauty and unspoilt landscape. This is a perfect place to access the inner moor, visit historic houses, inspiring gardens, catch glimpses of the majestic red deer and the wild Exmoor ponies. The guided tour starts in Lynton down to Lynmouth where spare time is offered. Packed dinner will be ordered instead of normal dinner.

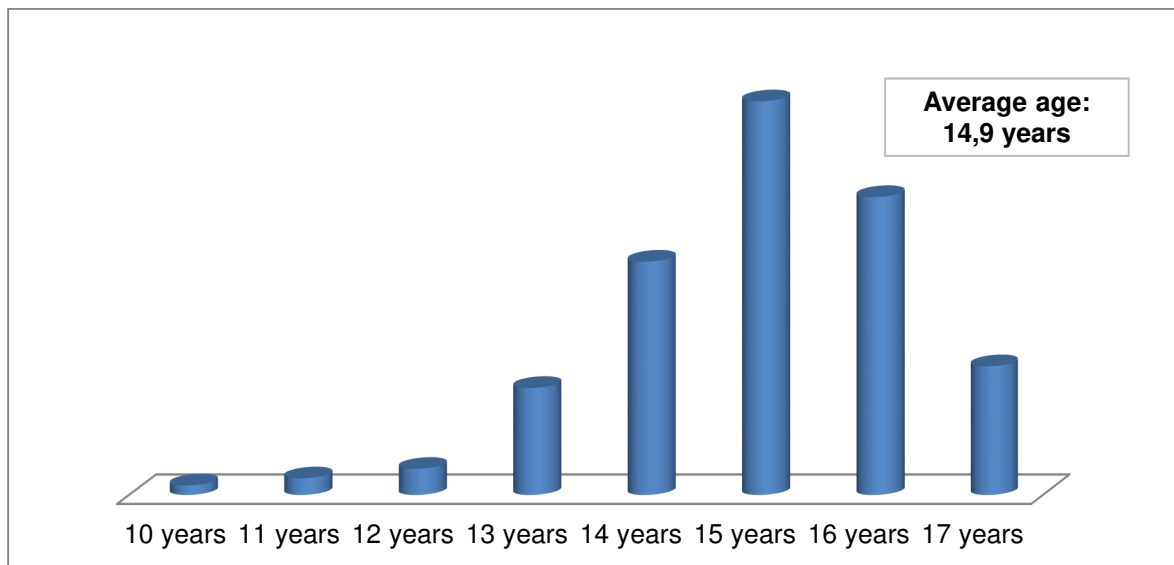
(Times indicate departure in the morning from centre and arrival back in the centre in the evening – depending on traffic)

learn more than a language

Students 2018 – Nationalities



Students 2018 – Ages



Last update: 31.08.2018