

learn more than a language



Winchester

SUMMER LANGUAGE HOLIDAYS

10-12; 13-15 and 16-17 years



! Quick Check

Ages	10-12, 13-15 and 16-17 years & see Covid-19 secure notes
Centre Type	University Campus on site
School distance	To city centre: 1.2 km / 15-minute walk
Courses Available	General English (15x45 min / 11.25 hrs) Intensive English (20x45 min / 15 hrs) Mini Group English (20x45 min / 15 hrs)
Capacity	Max. 200 Residential
(Main) Arrival / Departure day	Saturday
Centre dates	03.07.2021 to 14.08.2021
Nationality Mix 2019	German, Spanish, Russian, French, Italian, Omani etc.
Specials	London Stopover (for closed groups only)
Main Airports	Southampton (25 minutes) Bournemouth (1 hour) London (1.5 hours)
Distance to London	90 km
Tourist attractions	London, Oxford, Portsmouth, Southampton, Brighton

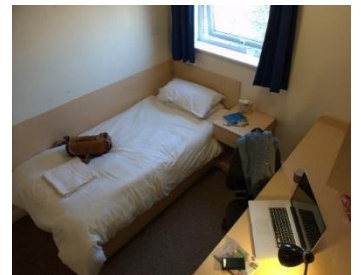
Accredited by the
BRITISH COUNCIL
 for the teaching
 of English in the UK



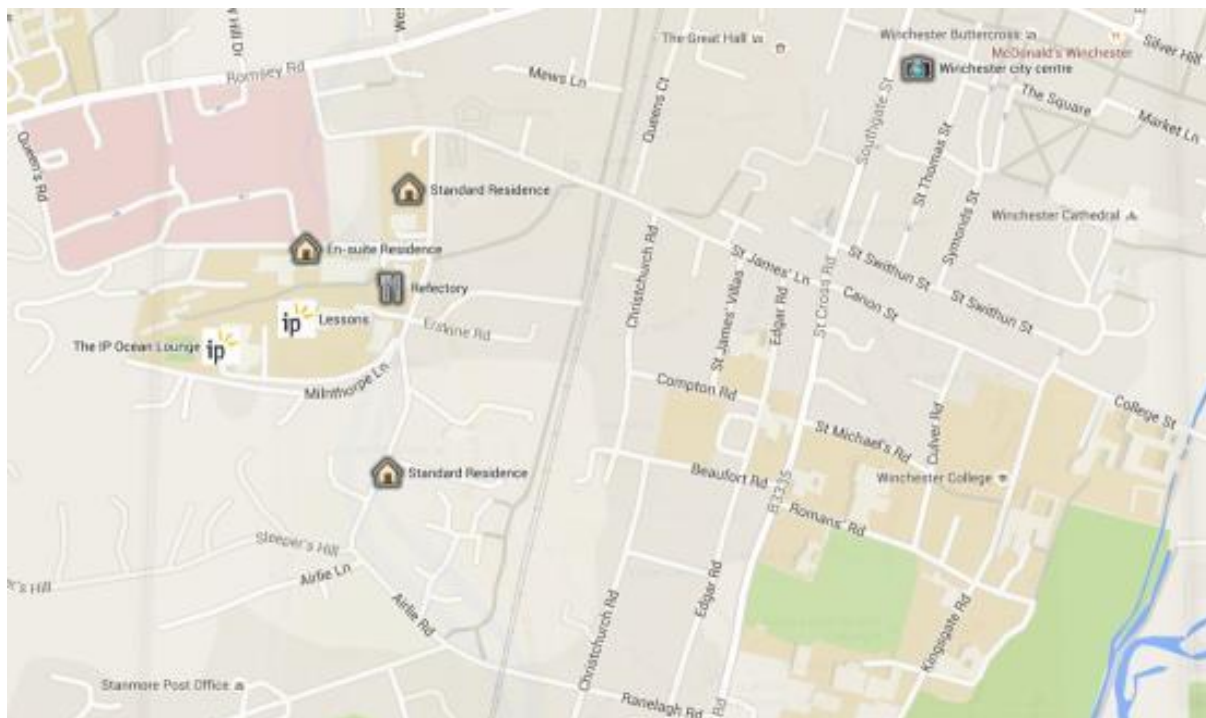
learn more than a language

General Information

- ✚ Residential single rooms with shared or private bathroom, full board
- ✚ Modern classrooms in the campus' main buildings
- ✚ Large green area for all sorts of activities
- ✚ Great sports facilities, Indoor Sports hall
- ✚ Outdoor tennis court and football ditch
- ✚ IP Ocean Lounge: social lounge for our students, open daily until bedtime
- ✚ Large dining hall
- ✚ Free Wifi in IP Ocean
- ✚ Campus is accessible for disabled students (access for wheelchairs) but is very hilly



Campus Map



learn more than a language

Accommodation & Catering

Residential Accommodation – King Alfred Campus

The residential facilities comprise modern study blocks situated on King Alfred Campus. The various residences are within easy reach of all activities, lessons, and meals.

General information

- ↳ 1 key per person, standard key for standard rooms, key card for en-suite rooms
- ↳ Male and female students do NOT share the same floor or flat
- ↳ Bedding: provided and changed weekly
- ↳ Towels: provided (one big towel)
- ↳ No cookers available, fridges available per flat
- ↳ Rooms and bathrooms cleaned twice a week
- ↳ Self-service laundry on campus (£2.20 per washing machine, £1.20 per dryer)
- ↳ Adapter: necessary, but not provided

Standard Rooms St. Elisabeth Hall

- ↳ Typical English building with three levels
- ↳ Single standard rooms
- ↳ Ratio of showers to students and staff is 1:6
- ↳ Beds, wardrobe, desk, washbasin, dresser, and a chair in every room
- ↳ Floor: carpet
- ↳ Lockable rooms with one key per student
- ↳ Room size: approx. 4x2 meter

En-suite rooms: Burma Road Student Village

- ↳ All rooms are single en-suite
- ↳ Kitchen which can be used as common room (no cooking/baking allowed; ovens are disabled)
- ↳ Beds, wardrobe, desk, and a chair in every room
- ↳ Floor: carpet
- ↳ Lockable rooms with one key per student
- ↳ Room size: approx. 4x2 meter

Meal plan

- ↳ Meal times: breakfast 7:45-8:45, lunch 12:30-13:30, dinner 18:00-19:00
- ↳ We cater for vegetarians and special diets e.g. gluten free, lactose free

learn more than a language

Language Courses

- ‡ Our summer school is accredited by the British Council
- ‡ Modern equipped classrooms at the IP School
- ‡ All our courses follow the European Framework of Reference Levels for Language Learning
- ‡ **Levels:** Pre-Intermediate (A2), Intermediate (B1), Upper Intermediate (B2), Advanced (C1)
- ‡ **Placement Test:** on the 1st day of class at 9:15, class allocation on Tuesday
- ‡ Teaching material provided
- ‡ **IP Certificate** at the end of the course
- ‡ No more than **15 students** are assigned per group. Generally, students' native languages vary, but they are of similar age.
- ‡ **All of our teachers are native or native level speakers. We primarily employ teachers who have a TEFL or PGCE qualification but in some peak weeks we may also work with In-Service Training Teachers who we feel have an appropriate background and experience.**

Available Courses

- ‡ **General English Course** (15x45 minutes/11.25 hours per week): levels A1 to C1, lessons from 9:00-11:45 including breaks
- ‡ **Intensive English Course** (20x45 minutes/15 hours per week): levels A1 to C1, lessons from 9:00-12:30 including breaks
- ‡ **Mini Group English Course** (20x45 minutes/15 hours per week): levels A1 to C1, lessons from 9:00-12:30 including breaks



Airports and Transfers

Low Budget Transfer from London Heathrow

For all UK centres we offer on **Saturday** a low budget transfer from/to London Heathrow. This requires flight arrival at London Heathrow Airport **before 16:30 (for non-European students we recommend arriving before 15:00)**. On the day of arrival our Meet & Greet Service will be waiting for your students at their arrival terminal and accompany them to the meeting point for all students and then to the transfer service. Our coach shuttle will depart from Heathrow or a nearby pick up service station at approximately 18:00 to leave to the course centres. After approx. 2 hours the students will be dropped off at the campus in Winchester.

On the day of departure, the students will depart early in the morning from the course centre and will be dropped-off at Heathrow between 11:00 – 12:00 - so please book the departing flight after 14:00. A staff member will help the students to their respective terminal and assists with the check in until 17:30. For all later departures there might be a supplement.

Please note: If flight arrival is before 13:00 we urgently recommend a private transfer to avoid long waiting times. Departing flights should be before 17:00 otherwise we also recommend a taxi transfer. **If you do not make it on time to the coach shuttle on arrival, e.g. because your flight is delayed, border control takes too long, etc., there might be a supplement.**

Individual Transfer

Available transfers with private coach or taxi at any time requested. Other airports on request only.

- ✚ Southampton Airport: 20 km, ca. 30 minutes
- ✚ Bournemouth Airport: 60 km, ca. 1 hour
- ✚ Bristol Airport: 160 km, ca. 2.5 hours
- ✚ London Gatwick: 125 km, ca. 2 hours
- ✚ London Stansted: 183 km, ca. 2.5 hours
- ✚ London Heathrow: 87 km, ca. 1.5 hours
- ✚ London Luton: 137 km, ca. 2 hours

Transfers will be done by our well-known taxi and transfer companies with DBS checked drivers. On the day of arrival our Meet & Greet Service will be waiting for the students at the exit area of customs with a sign of either the students' name/s or our company name on it and will take them directly to their course centre. On the day of departure, the students will leave the centre as required in order to make sure they arrive at the airport in time to check in. For students' safety, we assist them with the check-in for their flight.

Unaccompanied Minor Service

Please keep in mind that a return UM-service must be booked if your student uses the UM-service with his/her airline on arrival/departure (supplement).

learn more than a language

Specials (with supplement)

London Stopover (for groups only)

For closed groups we offer a Stopover in London at arrival or departure for one or two nights. Accommodation is provided in a youth hostel, full board (half board upon request only), tube tickets and of course transfer from or to the Airport are included as well. The group will be assisted by a member of IP staff during their stay. There will be a guided tour for the group passing the main sights such as Trafalgar Square, The Mall, Buckingham Palace, Big Ben, the Houses of Parliament, Westminster Abbey... (entrance fees are not included). Of course, we are happy to pre-book any London attraction such as the London Eye or Madame Tussauds for you (at extra cost) prior to arrival of the group. For more detailed information about the London Stopover on arrival or departure, please do not hesitate to contact us.

learn more than a language

Supervision

Our friendly and helpful International Team will run a supervised activity programme and guarantee supervision. They have been trained intensely to get prepared for their summer job. Our supervision ratio is based on age groups, for the age group 13 and older we follow a ratio of 1:15, for students 12 and younger 1:10.

Students under the age of 13 are supervised more thoroughly by specially trained staff members. The activity programme is mandatory for you and your supervisors will ensure that you take part in the offered activities. You are not allowed to leave the campus without supervision, but we will offer town walks almost every day. It is not possible for your parents to give you permission to leave the campus on your own. The supervision ratio for this age-group is 1:10 to guarantee the safety and well-being of our younger students.

Teenagers aged 13 to 15 participate in a compulsory programme with a wide range of activities. You are not allowed to leave the campus without staff members – even if your parents give you permission to do so. Our staff members accompany you into town and/or to the beach. You will have the opportunity to explore the city centre and/or the beach on your own in pairs or bigger groups for a certain amount of time. From the meeting point in the city centre, your staff members will take you back to the campus. Those of you who are staying in homestay will make your way independently to the campus and back to your hosts. In general, we adhere to the official supervision ratio of 1:15. The programme is mandatory for you in this age group and you can choose from the various options.

Teenagers aged 16 or 17 are free to experience and explore things with their friends in pairs or bigger groups on and off campus. Our supervisors provide a good mix of supervision and personal freedom for this age group. Participation in the afternoon and evening activity programme is voluntary for students over the age of 16. You can choose between taking part in the offered programme activities or exploring the town with your friends in pairs or bigger groups in the afternoon after informing our staff members and signing out. You will not be allowed to leave the campus without supervision after dinner, but there can be special supervised programme activities off the campus for you. If you don't want to take part in the evening programme, you can choose to stay in the residence from time to time where a staff member will be around to make sure that everything is all right. The supervision ratio for this age group is 1:15.

Our supervisors may restrict the level of freedom if necessary, for example if you don't follow our centre rules!

Important information for groups: If students travel in a closed group, the accompanying group leader is responsible for their supervision in line with our supervision policies and procedures and working alongside our team. The group leader will be fully integrated into our teams and all the rules and regulations and policies will be communicated to them prior to arrival in our centres. Our teams do very much appreciate any active support from the group leaders on site.

learn more than a language

Sample Activity Programme

IP Winchester – centre of Kings and Legends

	Saturday	Sunday	Monday	Tuesday	Wednesday	Thursday	Friday
Morning	Meet & Greet	7:45 – 8:45	7:45 – 8:45	7:45 – 8:45	7:45 – 8:45	7:45 – 8:45	7:45 – 8:45
	Breakfast	Breakfast	Breakfast	Breakfast	Breakfast	Breakfast	Breakfast
	9:00 – 10:30	9:00 – 10:30	9:00 – 10:30	9:00 – 10:30	9:00 – 10:30	9:00 – 10:30	9:00 – 10:30
	Welcome Meeting & Campus Tour	IP Dance Workshop	Lessons	Lessons	Lessons	Lessons	Lessons
	10:30 – 12:30	Fitness 1	Break IP Ocean	Break IP Ocean	Break IP Ocean	Break IP Ocean	Break IP Ocean
	Town Walk	Chill-out / Fitness 2	Lessons	Lessons	Lessons	Lessons	Lessons
	12:30 – 13:30	12:30 – 13:30	12:30 – 13:30	12:30 – 13:30	12:30 – 13:30	12:30 – 13:30	12:30 – 13:30
	Lunch	Lunch	Lunch	Lunch	Lunch	Lunch	Lunch
	13:30 – 14:00	13:30 – 14:00	13:30 – 14:00	13:30 – 14:00	13:30 – 14:00	13:30 – 14:00	13:30 – 14:00
	Assembly	Assembly + TTT	Assembly + TTT	Assembly + TTT	Assembly + TTT	Assembly + TTT	Assembly + TTT
Afternoon	14:00 – 15:30	14:00 – 15:30	14:00 – 15:30	14:00 – 15:30	14:00 – 15:30	14:00 – 15:30	14:00 – 15:30
	Residence Check-In	Sport	Sport	Sport	Sport	Sport	Sport
	15:30 – 17:00	Fun Game 1	Arts & Crafts 1	Health & Beauty 1	Digital Workshop 1	Arts & Crafts 1	Food & Drinks 1
	Sport	Fun Game 2	Arts & Crafts 2	Health & Beauty 2	Digital Workshop 2	Arts & Crafts 2	Food & Drinks 2
	Chill-Out	Chill-Out	Chill-Out	Chill-Out	Chill-Out	Chill-Out	Chill-Out
	14:00 – 17:00	14:00 – 17:00	14:00 – 17:00	14:00 – 17:00	14:00 – 17:00	14:00 – 17:00	14:00 – 17:00
Town Walk	Town Walk	Town Walk	Town Walk	Town Walk	Town Walk	Town Walk	
Evening	18:00 – 19:00	18:00 – 19:00	18:00 – 19:00	18:00 – 19:00	18:00 – 19:00	18:00 – 19:00	18:00 – 19:00
	Dinner	Dinner	Dinner	Dinner	Dinner	Dinner	Dinner
	19:00 – 19:45	19:00 – 19:45	19:00 – 19:30	19:00 – 19:30	19:00 – 19:30	19:00 – 19:30	19:00 – 19:30
	Welcome Meeting	Welcome Meeting	TTT (Time to Talk)	TTT (Time to Talk)	TTT (Time to Talk)	TTT (Time to Talk)	TTT (Time to Talk)
	19:45 – 20:00	19:45 – 20:00	19:30 – 20:00	19:30 – 20:00	19:30 – 20:00	19:30 – 20:00	19:30 – 20:00
	TTT (Time to Talk)	TTT (Time to Talk)	IP Ocean Chill Out	IP Ocean Chill Out	IP Ocean Chill Out	IP Ocean Chill Out	IP Ocean Chill Out
20:00 – 21:45	20:00 – 21:45	20:00 – 21:45	20:00 – 21:45	20:00 – 21:45	20:00 – 21:45	20:00 – 21:45	
Movie Night	Quiz Night	Welcome Theme Party	Games Night	Chill Night	IP's Got Talent	Farewell Theme Party	
Night	Night Check	Night Check	Night Check	Night Check	Night Check	Night Check	Night Check
	22:30 – 07:15	22:30 – 07:15	22:30 – 07:15	22:30 – 07:15	22:30 – 07:15	22:30 – 07:15	22:30 – 07:15
	Peace and Quiet	Peace and Quiet	Peace and Quiet	Peace and Quiet	Peace and Quiet	Peace and Quiet	Peace and Quiet
Trips & Specials							
	FD Trip	FD Trip	HD Trip		HD Trip		
	London Stopover						

* Due to different arrival and departure dates and times there will be several Welcome Meetings throughout the weekend.

**Several full day trips might be on offer and take place on Saturdays and Sundays. The exact times will be communicated in the centre.

IP Winchester 2021: Sample Programme Description

Our IP activity programme is a varied mix of workshops, sport activities, games and evening events aiming to provide our students with safe, fun and intercultural environment, which represents our IP philosophy 'Learn more than a Language'. What is more, we select and prepare our activities with a great care in order to fit into students' area of interest as well as their need of freedom and independence.

Afternoon Programme

Town Walk
Chill-Out

Supervised walk to the town centre for shopping and spending time in town with friends, offered daily to our students.
Supervised time in our specially designated chill-out zones equipped with table tennis, badminton nets and rockets, football tables & board games

learn more than a language

Fitness	Jogging, Body weight and gymnastic workouts, Kettlebells workouts, Obstacle runs, Mobility & Stretching sessions, Nutrition & Health workshops
Sport	Football, Volleyball, Basketball, Dogdeball, Kettlebell Trainings & Bodyweight Workouts, Zumba, Jogging & Stretching
Fun Games	Capture the Flag, Hide & seek, Photo Rally, Treasure Hunt
Arts & Crafts	Pimp your T-shirt, DIY Keyrings, Friendship bracelets, DIY dream catcher, DIY Kite, DIY Postcard & souvenirs
Health & Beauty	Henna tattoos, Nail Art, Face masks, Hand massage, Head massage, Make up workshops, Yoga & Relaxation
Food & Drinks Workshop	Cupcake workshop, Cocktails workshop, Smoothie workshop, Sushi workshop
Trendy / Digital Workshop	Instagram/photoshoot workshop, Internet Memes workshop, DIY computer game workshop (Scratch programming), Videomaking

Evening Programme

Fixed IP Programme	Movie Night on arrival, IP Quiz Night, Open Stage Night: IP's Got Talent
Party Nights	Welcome Party, Farewell Theme Parties (Hawaiian, Bad Taste, Pyjama, Neon, White Sensation, Film Parties)
Game Nights	Murder Mystery, Scavenger Hunt, Haunted House, Casino & Fun Fair Nights, Escape Room, Prove your senses, Chaos Game
Chill Nights	Barbecue Night, 'Chill on the hill', Live Music & Karaoke

Trips & Specials

Trips	Full Day Trips: London, Bath, Brighton, Oxford Half Day Trips: Southampton, Bournemouth, Salisbury, Portsmouth, Arundel, New Forest <i>Trip programme consist of +/- 1 hour guided walking tour with an IP staff member and free time for shopping</i>
Specials	London Stopover (for closed groups only)

learn more than a language

Sample Excursions

Below you find detailed descriptions of our full and half day excursions. Times indicate departure from the centre and arrival back in the centre in the evening – these might vary depending on traffic. Due to the ongoing situation concerning the spread of Covid-19 the availability of the listed trips and/or sights within the listed trip destinations might vary. Please read our Covid-19 secure notes on the last page of this document carefully.

IP's full day excursions:

After breakfast, we will meet in the campus, where you will get your packed lunch. The coach will pick us up there and we'll start the journey to the chosen destination. One of our trained IP staff members will give you a guided tour of the city/area. Every tour starts with some background information on the destination and lasts for 1h15 to 2h. We will stop in different points of interest to take some pictures and tell you the most interesting stories about the places. After the guided tour, we will reach the set meeting points where students will get 1h30 to 2h30 free time in pairs or small groups. The supervisor will indicate where are the closest shops and cafes, and students will be free to discover the surroundings on their own, within a maximum of 20mins walking distance. According to the students age, and the amount of free time allowed, they might have to check in mid-time. We will meet in the same meeting point at a specified time, walk back together to the coach and start our journey back to the centre.

Full day trip destinations

London from 08:00-19:00/20:00: During this full day trip you have a unique chance visit one of the most recognisable capital cities in the world and explore its rich history. As London is too big to visit in just one day our guided tour will focus on Westminster. It will take you past London's most important seats of Royal and Political power. You will see many of London's most iconic attractions such as the Houses of Parliament, Big Ben, Westminster Abbey and Buckingham Palace. Our meeting point is Leicester Square from where you can enjoy shopping in top stores or have a nice lunch in one of the restaurants or cafes during your free time.

Bath from 08:30-18:00: Built for pleasure and relaxation, beautiful Bath has been a wellbeing destination since Roman times. The waters are still a big draw, both at the ancient Roman Baths and the thoroughly modern Thermae Bath Spa, which houses the only natural thermal hot springs in Britain you can bathe in. Immerse yourself in Bath's remarkable collection of museums, galleries and historic monuments during our walking tour, and enjoy this vibrant city. Take a walk during your free time in the town centre and listen to all the street artists playing music and enjoy the Georgian architecture that inspired Jane Austen's novels.

Optional for groups only: Entrance to Roman Baths for a supplement of £14 per person for a group of 20+ and/or Royal Crescent for a supplement of £ 6.70 (6-16yrs) per student and subject to availability.

Brighton 08:30-18:00: Brighton, located 47 miles south of London, is a really popular seaside resort. As it's the nearest south coast to London, it attracts every year around 11 million of visitors! It is known for its diversity and was called "happiest place to live in the UK". During our guided tour, we will discover some of its wonders, such as Brighton Palace Pier, Brighton Royal Pavilion (entrance fees not included), designed especially for King George, called the most eccentric place in the UK, the Theatre Royal, etc. During your free time in town, you will be able to go shopping in some big name shops or one of the hundreds of independent boutiques in "The Lanes", spend some time on the pier or at the beach, explore the world's oldest operating aquarium opened in 1872 (entrance fees not included), and have a look at the world's oldest operating electric railway, the Volks Railway.

Oxford 08:30-18:00: Oxford is situated about 60 miles from London. The city is known worldwide as the home of the University of Oxford, the oldest university in the English-speaking world, which is still one of the most respected in the country. Did you know that Oxford is where Alice in Wonderland was

born? Lewis Carroll was teaching at Christ Church when he befriended the Dean of the college and his daughter, Alice Liddell, who inspired Lewis Carroll. During the guided tour, we will discover Oxford's history through its buildings and architecture, walking through Christ Church, the Radcliffe Camera, the historical covered market, the Bodleian Library, The Carfax Tower, Sheldonian theatre, and others. But Oxford has much else to offer! During your free time, you will have the possibility to explore the gardens, or to go shopping in one of the large shopping malls!

Optional for groups only: Entrance to Christ Church College for a supplement of £12 per person and due to availability.

IP's half day excursions:

After lunch, the coach will pick us up in the campus and we'll start the journey to the chosen destination. You will then get a guided tour from one of our trained IP staff members of the city/area. Every tour starts with some background information on the destination and lasts for 45mins to 1h15. We will stop in different points of interest to take some pictures and tell you the most interesting stories about the places. After the guided tour, we will reach the set meeting points where students will get 1 to 2h free time in pairs or small groups. The supervisor will indicate where are the closest shops and cafes, and students will be free to discover the surroundings on their own, within a maximum of 20mins walking distance. According to the students age, and the amount of free time allowed, they might have to check in mid-time. We will meet in the same meeting point at a specified time, walk back together to the coach and start our journey back to the centre.

Half day trip destinations

Southampton ca.13:30-18:00: Southampton is the largest city in the county of Hampshire, on the south coast of England. It has the busiest cruise terminal and second largest container port in the UK, and was one of the departure points for D-Day! Very rich in history, and in a constant modernisation, Southampton is shared between the industrial part, with a large shopping centre and retail park, and its historical heart. We will discover together the terminal, see the SS Shieldhall, Holyrood Church and Tudor House in the old town, the medieval walls,... After our guided tour where we will pass the Titanic Memorial, the harbour and the Bargate. You can spend your free time shopping in the mall, or visit the Sea City Museum to discover more about Southampton and the Titanic's story (entrance fees not included).

Portsmouth ca.13:30-18:00: Portsmouth is an English port city in the county of Hampshire. It was the most heavily-fortified town in the world and was considered "the world's greatest naval port". Birthplace of Charles Dickens, naval and maritime heritage, world-class visitor attractions, unique shopping destination, and miles of beautiful waterfront... Portsmouth is unique and has a lot to offer! We'll start our tour with the modern emblem of Portsmouth: the Spinnaker Tower and its impressive 170m height, see some of the vessels in the historic Dockyard, as HMS Warrior and HMS Victory, visit of South Sea Castle followed by shopping at Gunwharf Quays.

Bournemouth, ca.13:30-18:00: As voted second year in a row in the 'Trip Advisor' by the Travellers, Bournemouth offers the best Beach in the whole United Kingdom! Founded in 1812 by Lewis Tregonwell, this beautiful seven-mile stretch of unspoilt coastline and Blue Flag beaches provide the perfect backdrop for a day trip. This is why Bournemouth counts around 4.7 million visitors each year. We will see during the guided tour Bournemouth pier, with the Big Wheel offering amazing views on the city, Bournemouth International Centre, Bournemouth Gardens,... Enjoy your free time to spend some time at the beach, jump on the Big Wheel (entrance fees not included), or to do some shopping in the main streets.

Salisbury (incl. Cathedral visit) ca.13:30-18:00: Salisbury is known as the "city in the countryside", the magnificent medieval city has a lot to offer, including one of the UK's finest cathedrals. Salisbury Cathedral and its surrounding Close attract some 500,000 visitors each year. There is nearly 800 years of history that we will explore during your guided tour, including Britain's tallest spire, the best preserved of only four surviving 1215 Magna Carta documents, the world's oldest working mechanical clock, the haunted hostelry The Haunch of Venison,... During your free time in the high street, you will be able to go shopping, or enjoy the historical market held every Tuesdays and Saturdays since 1227!

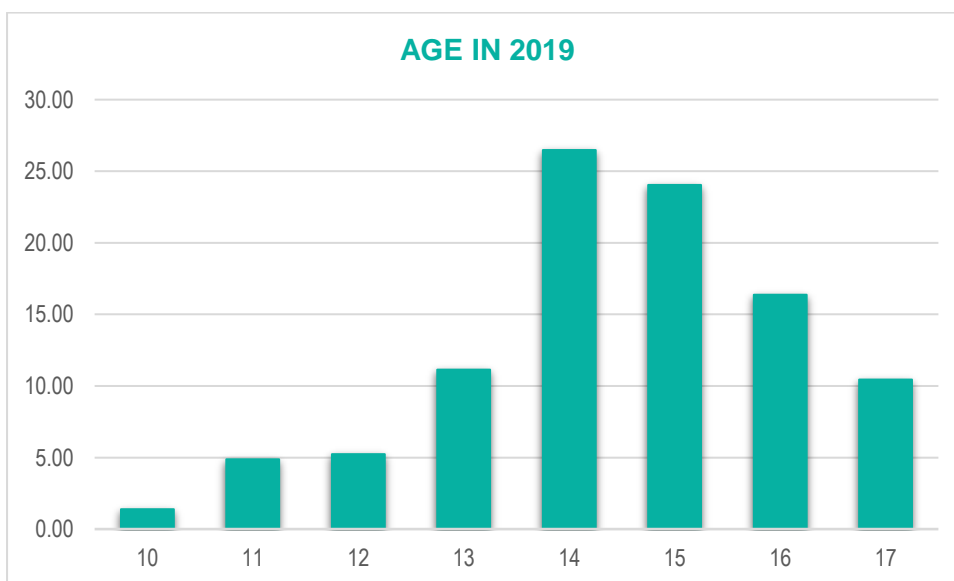
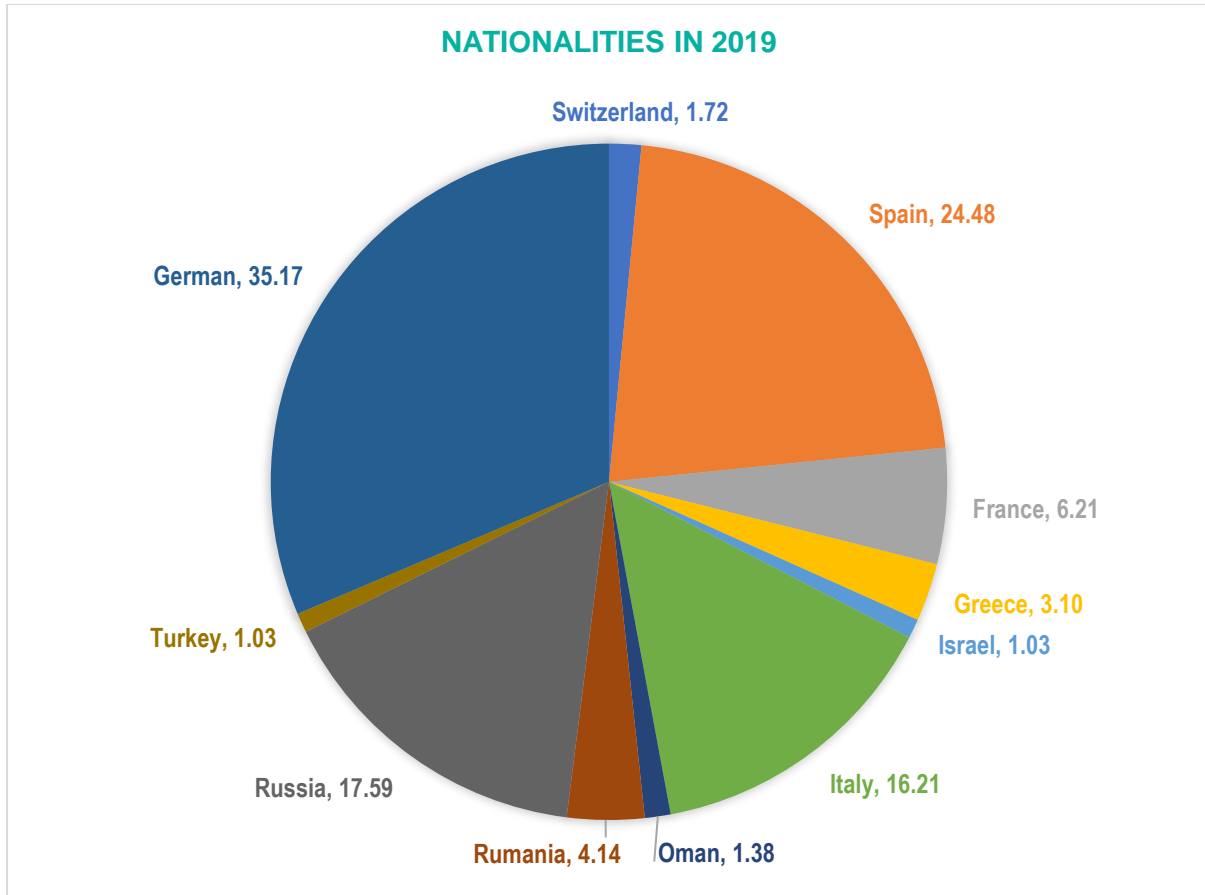
learn more than a language

Stonehenge (for groups only) ca.13:30-18:00: Walk in the footsteps of your Neolithic ancestors at Stonehenge – one of the wonders of the world and the best-known prehistoric monument in Europe. Explore the ancient landscape on foot and step inside the Neolithic Houses to discover the tools and objects of everyday Neolithic life. Visit the world-class exhibition and visitor centre with 250 ancient objects and come face to face with a 5.500 years-old man. **A supplement of £15 per person applies.**

Information for closed groups only: If you wish to visit any sight during one of our trips with your group feel free to contact us. We are happy to arrange entrances for closed groups where possible and if prepaid. Entrances are subject to availability of the chosen sight.

learn more than a language

Students in 2019 (by nationality and age)



Last updated: 15 December 2020

learn more than a language

Covid-19 secure notes

We are experienced since summer 2020 as we have been successfully running a summer camp in Hohensolms (Germany) under Covid-19 rules and safety measures.

The health and safety of our students, staff and visitors is our main priority. We will be strictly following all the recommendations and guidance issued by health authorities at our centres.

At that point of the year, we can't precisely describe how each centre will work as we don't know exactly what will be implemented by English government and local authorities in Bournemouth.

Safety measures could for example include: wearing masks in the common areas of the residence, wearing masks in public transport and/or on busses during our excursions, keeping the minimum distance in classrooms and during activities. The necessary measures will be defined prior to the students' arrival and are subject to changes if needed.

Trip destinations might not all be available depending on the current situation in the different trip destinations during the summer. If any trip destination has too many cases of Covid-19 we will change the trip to another destination to protect the health of our students and staff.

Updated information can be found on our website. Individual clients will receive all the necessary information with their travel documents 7-10 days prior to arrival. For closed groups we will inform the agents / group leader prior to the group's arrival to the destination.

Deferred students due to Covid-19:

We don't accept students aged 18+ on to our junior programmes, however due to the exceptional circumstances caused by the Covid-19 crisis a few 18 year old students who deferred their course from 2020 may be joining the course in 2021. A full risk assessment has been completed and students aged 18 will not be placed into any residential accommodation with students aged below 16 years. Any 18 year olds will need to follow the IP rules and regulations for junior students. For further information please call us to discuss.



Scan Me

By scanning the QR code you can discover a video about our summer camp in Hohensolms with Covid-19 safety measures in place. Students kept the needed distance but were divided in small groups with one member of staff responsible for them. Within these smaller groups they did not have to keep the distance. Taking busses for trips always happened with masks on. Hand sanitizer was available everywhere and anytime. We were strictly following the rules and regulations of the local health authorities at all times.

We received a throughout positive feedback. Many students even extended their stay with us as they and their parents felt very safe and at the same time the students were enjoying their holidays.