

learn more than a language



Ringwood.  
Moyles Court



## SUMMER LANGUAGE HOLIDAYS

9-12 and 13-15 years

### ! Quick Check

<b>Ages</b>	9-12 and 13-15 years
<b>Centre Type</b>	<b>Moyles Court</b> Campus on site
<b>Campus distance</b>	To city centre: 12.6 miles / 60-minute walk
<b>Courses Available</b>	Intensive English (20x45 min / 15 hrs)
<b>Capacity</b>	Max. 40 Residential
<b>(Main) Arrival / Departure day</b>	Sunday for individuals, Sat and Sun for groups Saturdays
<b>Centre dates</b>	07.07.2024 until Saturday 11.08.2024
<b>Nationality Mix 2022</b>	Spanish, Ukrainian, Azerbaijan, French etc.
<b>Main Airports</b>	Bournemouth (30 minutes) Southampton (1 hour) London Airports (2-3 hours)
<b>Distance to London</b>	140 km
<b>Tourist attractions</b>	London, Oxford, Brighton, Bath, Portsmouth, Winchester, Salisbury, Bournemouth
<b>Nearest Health Care Centre</b>	Ringwood Medical Practice Parkers Cl, Gorley Rd, Poulner, Ringwood BH24 1SD, UK
<b>Closest Hospital</b>	University Dorset Hospital Castle Ln E, Bournemouth BH7 7DW, UK

Accredited by the  
**BRITISH COUNCIL**  
for the teaching  
of English in the UK



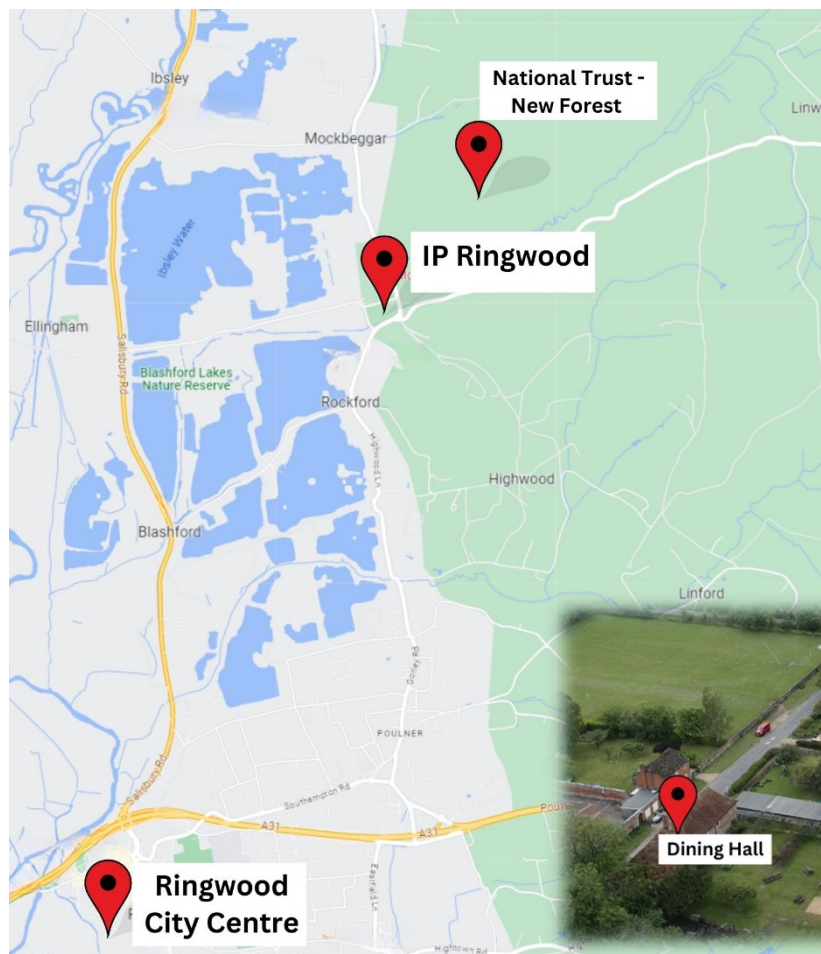
learn more than a language

## General Information

- ✚ Residential 2-6-bedded rooms with shared bathroom, full board
- ✚ Self-contained campus with classrooms on the side
- ✚ IP Ocean Lounge: meeting point and social space for our students
- ✚ Dining hall (approx. 70 seats per sitting)
- ✚ Sports facilities such as extensive sport fields, Astroturf, tennis courts, indoor sports hall
- ✚ Internet access on campus
- ✚ Outdoor night in the woods in tents
- ✚ Bonfire night every week



## Map





## Accommodation & Catering

### Residential Accommodation

The residential facilities comprise traditional English Boarding School houses. The accommodation, IP Ocean lounge and the refectory are in the same building.

### General information

- ✚ Bedding: Provided and changed weekly
- ✚ Towels: **not** provided
- ✚ No cookers available; fridges can be used in common rooms by prior request (IP staff have a fridge for medical use, etc.)
- ✚ Deep clean of rooms and washrooms once a week, bins will be emptied in bedrooms each day
- ✚ Laundry service on campus available, done once a week for students (included in rate)
- ✚ Free WIFI access in all rooms

### Standard rooms with shared bathroom

- ✚ 2-6-bedded standard rooms
- ✚ 1 boarding house with each 41 beds on two floors (average 1 shower for 5 students, 1 toilet for 6 students)
- ✚ wardrobe, desk and chair in each room
- ✚ Floor: carpet
- ✚ Large spacious shared rooms

### Meal plan

- ✚ Meal-times: breakfast 8:00-8:50, lunch 12:30-13:30, dinner 18:00-19:00
- ✚ We cater for vegetarians and special diets e.g. gluten free, lactose free and halal, celiac disease. Requirements must be sent to IP 1 week prior to arrival



## Language Courses

Our summer school is accredited by the esteemed **British Council** for English language teaching in the UK and a proud member of **English UK**, the world's premier language teaching association.

### Dynamic Learning Environment

- ✦ Students at Europa School of English thrive in diverse and engaging classes, where they connect with **peers from around the world** in **equipped classrooms**.
- ✦ With class sizes limited to a **maximum of 16 students**, they will experience a personalized approach to education, allowing for deeper connections with both their classmates and dedicated teachers.

### Expert Instruction and Comprehensive Materials

- ✦ Our passionate and dedicated teachers are here to guide all our students every step of the way. They bring their expertise and enthusiasm to the classroom, ensuring that our students receive the best possible language education.
- ✦ All course materials are provided, ensuring a seamless and comprehensive learning journey.

### Online Placement Test

- ✦ Prior to arrival, students will be required to complete an **online placement test**. This test will gauge students' current English language skills and knowledge, helping us understand their strengths and areas for improvement.
- ✦ The online test is designed to be **convenient** and **flexible**, allowing students to complete it at a time that suits them best. It ensures students are positioned in a class that matches their abilities.
- ✦ If students can't complete the test beforehand, they will join a mixed-level testing group on their first day, with the opportunity to take the test during their initial lesson.

### Observation of Speaking Skills

- ✦ Upon arrival and commencement of lessons, our dedicated teachers will conduct **comprehensive observations** during the students' first day of classes. Specifically focusing on **speaking skills**, these observations will provide valuable insights into students' real-time language abilities and interaction in a classroom setting.

### Customized Class Placement

- ✦ The **speaking component** score obtained from the classroom observations will be combined with the results of the **online placement test**. This comprehensive approach ensures a **holistic evaluation** of students' language skills. Based on this combined assessment, students will be placed in a suitable English language level that aligns perfectly with their proficiency.

### Learning Aligned with Proficiency

- ✦ At our Summer School, class allocation is determined by students' **language level**, not by age, education, nationality, or preferences. We prioritize creating **international student groups** whenever possible, fostering cross-cultural connections and enhancing the learning experience.

### Progress Assessment for Continuous Growth

- ✦ At the close of each week (Thursday), students engage in a **progress test** that evaluates their language development. This assessment helps gauge progress and aids in determining if a move to a different level is appropriate. This dynamic approach ensures that students are always learning at a level that challenges and nurtures their growth.

### Celebration of Achievements

- ✦ The culmination of students' time at Europa School of English is marked by a memorable **graduation ceremony**.



- ✦ As a testament they receive a **language certificate**. This certificate reflects their language proficiency level, calculated as an average of their performance on the final progress test and their initial online placement test. Additionally, the certificate will feature a personalised comment from one of their teachers.

brand name of FG Languages Ltd.

### Language levels

- ✦ Our assessment test is meticulously designed to map skills to the CEFR framework.
- ✦ We offer a clear trajectory of proficiency levels:
  - **Elementary (A1)**: Lay the foundations of your language journey.
  - **Pre-intermediate (A2)**: Progress towards confident communication.
  - **Intermediate (B1)**: Navigate conversations and interactions with ease.
  - **Upper-intermediate (B2)**: Embrace fluency and nuanced expression.
  - **Advanced (C1)**: Master the language intricacies with finesse.

### Available Course

- ✦ **Intensive Course of English**
  - For an immersive enhancement, consider our Intensive English Course (20 lessons a week).
  - This supplement integrates the General English Course (Monday to Friday, 09:00-11:45, including breaks) with an extra daily session (11:45 - 12:30), devoted to project-based learning, group dynamics, writing finesse, and public speaking prowess.



## Airports and Transfers

### Low Budget Transfer from London Heathrow

For all UK centres we offer on **Sunday** a low budget transfer from/to London Heathrow. This requires flight arrival at London Heathrow Airport **before 16:30 (for non-European students we recommend arriving before 15:00)**. On the day of arrival our Meet & Greet Service will be waiting for your students at their arrival terminal and accompany them to the meeting point for all students and then to the transfer service. Our coach shuttle will depart from Heathrow or a nearby pick up service station at approximately 18:00 to leave to the course centres. After approx. 2 hours the students will be dropped off at the campus.

**On the Saturday** of departure, the students will depart **early in the morning** from the course centre and will be dropped-off at Heathrow between 11:00 – 12:00 - so please book the departing flight after 14:00. A staff member will accompany the students to their respective terminal and check in desk.

**Please note:** If flight arrival is before 13:00 we urgently recommend a private transfer to avoid long waiting times. Departing flights should be before 17:00 otherwise we also recommend a taxi transfer. **If you do not make it on time to the coach shuttle on arrival, e.g. because your flight is delayed, border control takes too long, etc., there might be a supplement.**

### Individual Transfer


Available transfers with private coach or taxi at any time requested. Other airports on request only.

- ✚ Bournemouth Airport: 10 km, ca. 20 minutes
- ✚ Southampton Airport: 46 km, ca. 1 hour
- ✚ London Gatwick: 175 km, ca. 2.5 hours
- ✚ London Stansted: 235 km, ca. 3 hours
- ✚ London Heathrow: 132 km, ca. 2 hours

Transfers will be done by our well-known taxi and transfer companies with DBS checked drivers. On the day of arrival our Meet & Greet Service will be waiting for the students at the exit area of customs with a sign of either the students' name/s or our company name on it and will take them directly to their course centre. On the day of departure, the students will leave the centre as required in order to make sure they arrive at the airport in time to check in. For students' safety, we assist them with the check-in for their flight.

### Unaccompanied Minor Service

Please keep in mind that a return UM-service must be booked if your student uses the UM-service with his/her airline on arrival/departure (supplement).



**WE ORGANIZE AND OFFER SHARED TRANSFERS.**

**PLEASE KEEP IN MIND THAT TRANSFERS MIGHT BE SHARED WITH**

**OTHER STUDENTS DUE TO LOGISTIC.**

**THIS APPLIES TO INDIVIDUALS AND GROUP BOOKINGS.**

## Supervision

Our friendly and helpful International Team will run a supervised activity programme and guarantee supervision. They have been trained intensely to get prepared for their summer job. Our supervision ratio is based on age groups, for the age group 13 and older we follow a ratio of 1:15, for students 12 and younger 1:10.

**Students under the age of 13** are supervised more thoroughly by specially trained staff members. The activity programme is mandatory for you and your supervisors will ensure that you take part in the offered activities. You are not allowed to leave the campus without supervision, but we will offer town walks almost every day. It is not possible for your parents to give you permission to leave the campus on your own. The supervision ratio for this age-group is 1:10 to guarantee the safety and well-being of our younger students.

**Teenagers aged 13 to 15** participate in a compulsory programme with a wide range of activities. You are not allowed to leave the campus without staff members – even if your parents give you permission to do so. Our staff members accompany you into town and/or to the beach. You will have the opportunity to explore the city centre and/or the beach on your own in pairs or bigger groups for a certain amount of time. From the meeting point in the city centre, your staff members will take you back to the campus. In general, we adhere to the official supervision ratio of 1:15. The programme is mandatory for you in this age group, and you can choose from the various options.

**Our supervisors may restrict the level of freedom, if necessary, for example if you don't follow our centre rules!**

**Important information for groups:** If students travel in a closed group, the accompanying group leader is responsible for their supervision in line with our supervision policies and procedures and working alongside our team. The group leader will be fully integrated into our teams and all the rules and regulations and policies will be communicated to them prior to arrival in our centres. Our teams do very much appreciate any active support from the group leaders on site.



### WHAT WE EXPECT FROM OUR GROUP LEADERS DURING SUMMER SEASON



- Supervision of their students according to age (under 16y/o's are not allowed to leave campus unattended, please see supervision concept on our website) which includes:
- Wake up and night checks
- check your students attendance for lessons, activities and trips
- attending assemblies and TTT (time to talk)
- participation in daily group leader meetings with Centre Manager (to be agreed in the centre)
- disciplinary actions when students are breaking rules (e.g. smoking, drinking, etc)
- reporting any damages or misbehaviour to Centre Manager



## Sample Activity Programme

### IP Ringwood – an international melting pot

#### (Sample Programme)

	Saturday	Sunday	Monday	Tuesday	Wednesday	Thursday	Friday
MORNING	07:30	07:30	07:30	07:30	07:30	07:30	07:30
	WAKE UP	WAKE UP	WAKE UP	WAKE UP	WAKE UP	WAKE UP	WAKE UP
	8:00 - 09:00	8:00 - 09:00	8:00 - 09:00	8:00 - 09:00	8:00 - 09:00	8:00 - 09:00	8:00 - 09:00
	BREAKFAST	BREAKFAST	BREAKFAST	BREAKFAST	BREAKFAST	BREAKFAST	BREAKFAST
	9:00 - 18:00	10:00 - 12:00	9:00 - 10:30	9:00 - 10:30	9:00 - 10:30	9:00 - 10:30	9:00 - 10:30
	FD trip to X	ARRIVALS & WELCOME MEETING	LESSONS	LESSONS	LESSONS	LESSONS	LESSONS
			10:30 - 11:00	10:30 - 11:00	10:30 - 11:00	10:30 - 11:00	10:30 - 11:00
			BREAK	BREAK	BREAK	BREAK	BREAK
			11:00 - 11:45	11:00 - 11:45	11:00 - 11:45	11:00 - 11:45	11:00 - 11:45
			LESSONS	LESSONS	LESSONS	LESSONS	LESSONS
	9:00 - 12:00		11:45 - 12:30	11:45 - 12:30	11:45 - 12:30	11:45 - 12:30	11:45 - 12:30
AFTERNOON	DEPARTURES	PHOTO RALLY	LESSONS	LESSONS	LESSONS	LESSONS	LESSONS
	12:30	12:30	12:30	12:30	12:30	12:30	12:30
	LUNCH	LUNCH	LUNCH	LUNCH	LUNCH	LUNCH	LUNCH
	13:30	13:30	13:30	13:30	13:30	13:30	13:30
	ASSEMBLY	ASSEMBLY	ASSEMBLY	ASSEMBLY	ASSEMBLY	ASSEMBLY	ASSEMBLY
	14:00 - 16:00	14:00 - 16:00	14:00 - 16:00	14:00 - 16:00	14:00 - 16:00	14:00 - 16:00	14:00 - 16:00
	GEOCACHING	PAPER MACHE	ARTS & CRAFTS	HD TRIP	DRAMA	ROUNDERS	CAPTURE THE FLAG
	VOLLEYBALL	FOOTBALL	MANHUNT		BASKETBALL	OUTDOOR SKILLS	SLIP & SLIDE
	16:00 - 18:00	16:00 - 18:00	16:00 - 18:00	16:00 - 18:00	16:00 - 18:00	16:00 - 18:00	16:00 - 18:00
	SUPERVISED FREE TIME	SUPERVISED FREE TIME	SUPERVISED FREE TIME	SUPERVISED FREE TIME	SUPERVISED FREE TIME	SUPERVISED FREE TIME	SUPERVISED FREE TIME
EVENING	18:00	18:00	18:00	18:00	18:00	18:00	18:00
	DINNER	DINNER	DINNER	DINNER	DINNER	DINNER	DINNER
	19:00	19:00	19:00	19:00	19:00	19:00	19:00
	TTT	TTT	TTT	TTT	TTT	TTT	TTT
	20:00 - 21:45	20:00 - 21:45	20:00 - 21:45	20:00 - 21:45	20:00 - 21:45	20:00 - 21:45	20:00 - 21:45
	MOVIE NIGHT	ICEBREAKER GAMES	WELCOME PARTY (British kids invited)	COPS & ROBBERS	QUIZ NIGHT	CAMP NIGHT (British kids invited)	FAREWELL PARTY (British kids invited)
NIGHT	22:30	22:30	22:30	22:30	22:30	22:30	22:30
	NIGHT CHECK	NIGHT CHECK	NIGHT CHECK	NIGHT CHECK	NIGHT CHECK	NIGHT CHECK	NIGHT CHECK

\* Due to different arrival and departure dates and times there will be several Welcome Meetings throughout the weekend.

### IP Moyles Court: Sample Programme Description

Our IP activity programme is a varied mix of workshops, sport activities, games and evening events aiming to provide our students with safe, fun and intercultural environment, which represents our IP philosophy 'Learn more than a Language'. What is more, we have the unique opportunity to join activities with British students on site.



learn more than a language

#### Afternoon Programme

<b>Sport &amp; Fitness</b>	Football, Basketball, Table Tennis, Dance, Zumba, Volleyball, Dodgeball, Badminton, Ultimate frisbee
<b>Fun Games</b>	Potato challenge, Treasure hunt, Photo Rally, Escape room, Park games, Geocaching, Water balloon battle, Werewolves, Chaos Game,
<b>Arts &amp; Crafts</b>	Graffiti workshop, Friendship bracelets, Pimp your T-shirt, Mandala workshop, Make your postcard, Paper Mache DIY dream catcher
<b>Health &amp; Beauty</b>	Yoga & Relaxation, Beauty workshop, Nail Art, Henna Tattoos
<b>Food &amp; Drinks Workshop</b>	Cocktail workshop, Crêpe workshop, Afternoon tea, Cake pops, Pimp your ocean & part prep
<b>Sport &amp; Fitness</b>	Football, Basketball, Volleyball, Manhunt, Slip & Slide, Outdoor skills, Capture the Flag

#### Evening Programme

<b>Fixed IP Programme</b>	Movie Night on arrival, IP Quiz Night, Fancy Night
<b>Party Nights</b>	Welcome party, Open stage, Karaoke, Farewell party, Just dance battle, Neon party, Hawaiian party, Bad taste party, International party, Theme party, Prom
<b>Game Nights</b>	Quiz night, Casino night, Pimp your supervisor, Beat your supervisors, Minute to win it, Murder Mystery / Cluedo, Board games & charades, Fun Fair games, Haunted house, Icebreaker games, Cops & Robbers

#### Trips & Specials

<b>Trips</b>	Full Day Trips: London, Oxford, Bath Half Day Trips: Salisbury, Southampton, Winchester, Bournemouth (beach), Stonehenge, <i>Trip programme consist of +/- 1 hour guided walking tour with an IP staff member and free time for shopping. Exmouth: No guided tour, time for beach</i>
--------------	---

## Sample Excursions

Below you will find detailed descriptions of our full and half day excursions. Times indicate departure from the centre and arrival back in the centre in the evening – these might vary depending on traffic.

**We reserve the right to organise excursions by public transport.**

### IP's full day excursions:

After breakfast, we will meet in front of the school, where students will get their packed lunch (for students staying in the residence). The coach will pick us up there and we will start the journey to the chosen destination. One of our trained IP staff members will give students a guided tour of the city/area. Every tour starts with some background information on the destination and lasts for 1h15 to 2h. We will stop at different points of interest to take some pictures and talk about the most interesting stories about the places. After the guided tour, we will reach the set meeting points where students will get a minimum of 1h30 to 2h30 of free time in pairs or small groups. The supervisor will indicate where the closest shops and cafes are, and students will be free to discover the surroundings on their own, within a maximum of 20 minutes walking distance. According to the students' age, and the amount of free time allowed, they might have to check in mid-time. We will meet at the same meeting point at a specified time, walk back together to the coach and start our journey back to the centre.

### Full day trip destinations

**London from 08:30-20:00/21:00:** During this full day trip, students will have a unique chance to visit one of the most recognisable capital cities in the world and explore its rich history. As London is too big to visit in just one day our guided tour will focus on Westminster. It will take students past London's most important seats of Royal and Political power. They will see many of London's most iconic attractions such as the Houses of Parliament, Big Ben, Westminster Abbey and Buckingham Palace. Our meeting point is Trafalgar Square, from where students can enjoy shopping in top stores or have a nice lunch in one of the restaurants or cafes during their free time.

**Bath from 08:30-18:00:** Built for pleasure and relaxation, beautiful Bath has been a well-being destination since Roman times. The waters are still a big draw, both at the ancient Roman Baths and the thoroughly modern Thermae Bath Spa, which houses the only natural thermal hot springs in Britain you can bathe in. Students can immerse themselves in Bath's remarkable collection of museums, galleries, and historic monuments during our walking tour, and enjoy this vibrant city. They can take a walk during their free time in the town centre and listen to all the street artists playing music and enjoy the Georgian architecture that inspired Jane Austen's novels.

**Optional for groups only: Entrance to Roman Baths for a supplement of £17 per student (up to 17yrs person or a group of 20+ and/or Royal Crescent for a supplement of £8 (6-17yrs) per student and subject to availability.**

**Oxford from 08:30-18:00:** Oxford is situated about 60 miles from London. The city is known worldwide as the home of the University of Oxford, the oldest university in the English-speaking world. Did you know that Oxford is where Alice in Wonderland was born? Lewis Carroll was teaching at Christ Church when he befriended the Dean of the college and his daughter, Alice Liddell, who inspired Lewis Carroll. During the guided tour, students will discover Oxford's history through its buildings and architecture, walking through Christ Church, the Radcliffe Camera, the historical covered market, the Bodleian Library, The Carfax Tower, Sheldonian theatre, and others. But Oxford has much else to offer! During their free time, students will have the possibility to explore the gardens, or to go shopping in one of the large shopping malls!

**Optional for groups only: Entrance to Christ Church College for a supplement of £16 per student and due to availability.**

**IP's half day excursions:** After lunch, the coach will pick students up in front of the school and we will start the journey to the chosen destination. Students will then get a guided tour from one of our trained IP staff members of the city/area. Every tour starts with some background information on the destination and lasts for 45 minutes to 1h15. We will stop at different points of interest to take some pictures and tell you the most interesting stories about the places. After the guided tour, we will reach the set meeting points where students will get 1 to 2h free time in pairs or small groups. The supervisor will indicate where the closest shops and cafes are, and students will be free to discover the surroundings on their own, within a maximum of 20mins walking distance. According to the students' age, and the amount of free time allowed, they might have to check in at mid-time. We will meet at the same meeting point at a specified time, walk back together to the coach and start our journey back to the centre.

### Half day trip destinations

**Salisbury (incl. Cathedral visit) ca.13:30-18:00:** Salisbury is known as the "city in the countryside," the magnificent medieval city has a lot to offer, including one of the UK's finest cathedrals. Salisbury Cathedral and its surroundings attract about 500,000 visitors each year. There is nearly 800 years of history that students will explore during their guided tour, including Britain's tallest spire, the best preserved of only four surviving 1215 Magna Carta documents, the world's oldest working mechanical clock, and the haunted Haunch of Venison. During students' free time in the high street, they will be able to go shopping, or enjoy the historical market held every Tuesdays and Saturdays since 1227!

**Southampton ca.13:30-18:00:** Southampton is the largest city in the county of Hampshire, on the south coast of England. It has the busiest cruise terminal in the UK and was one of the departure points for D-Day. Rich in history, and in constant modernisation, Southampton is shared between the industrial part, with a large shopping centre and retail park, and its historical heart. Students will discover the terminal, see the SS Shieldhall, Holyrood Church and Tudor House in the old town, and the medieval walls. After our guided tour where we will pass the Titanic Memorial, the harbour and the Bargate, Students can spend their free time shopping in the mall or visit the Sea City Museum to discover more about Southampton and the Titanic's story (entrance fees not included).

**Winchester ca.13:30-18:30:** Winchester is the county town of Hampshire in Southeast England. It was the capital of the ancient kingdom of Wessex, ruled, among others, by King Alfred the Great. Winchester's major landmark is Winchester Cathedral, one of the largest cathedrals in Europe. It is also known for being the place where Jane Austen, one of the most famous authors of England, wrote some of her novels and where she is buried. During the guided tour, we will discover the riverside and medieval walls, see the house where Jane Austen lived, and also see Wolvesey Castle, the Cathedral, and Winchester Great Hall (entrance fees not included) where King Arthur's Round Table is hung. During free time, students can enjoy shopping in the medieval streets of the town or visit the impressive cathedral (entrance fees not included).

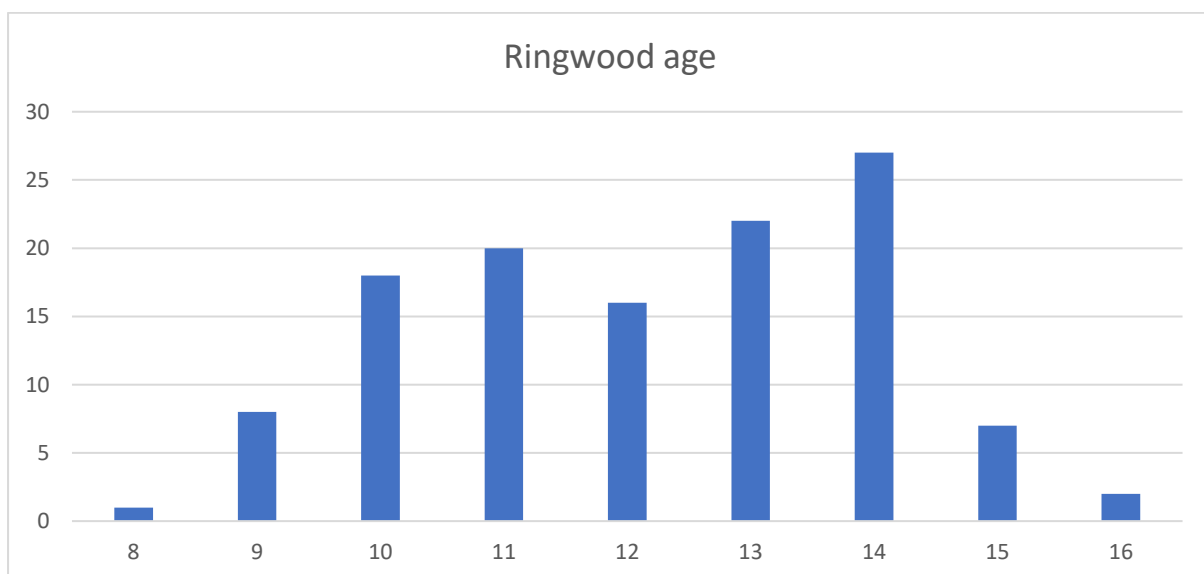
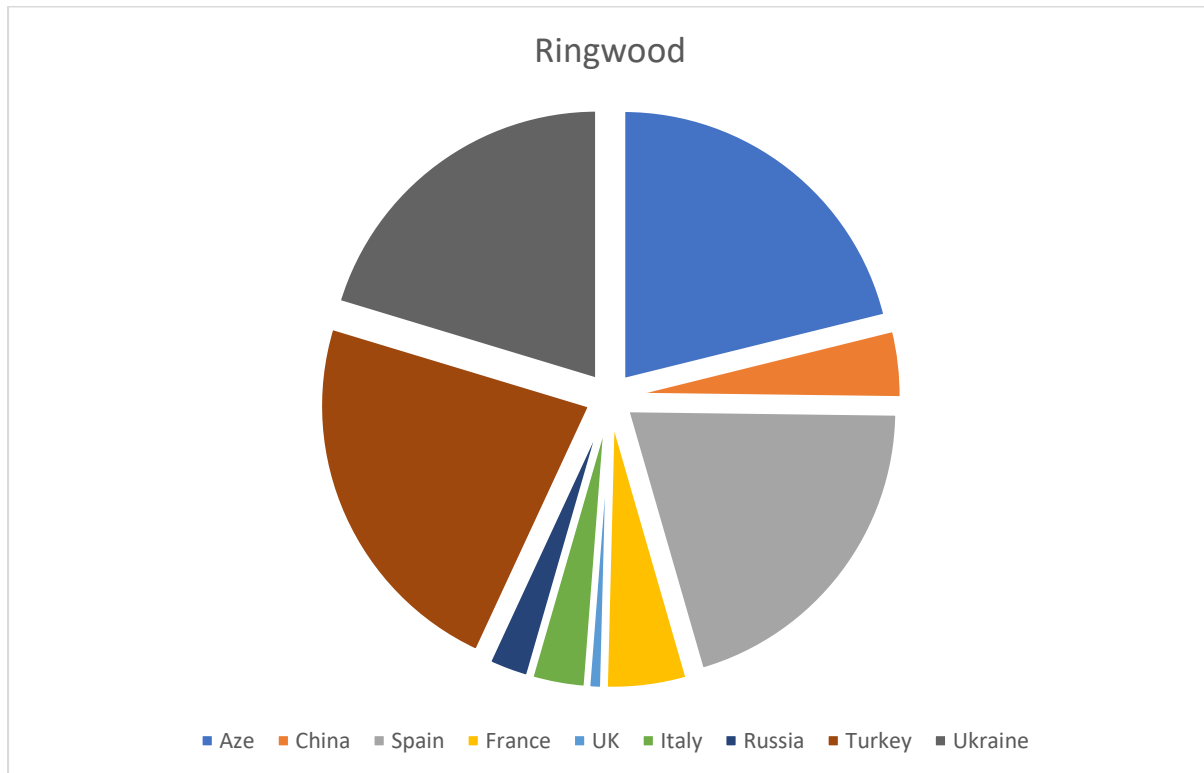
**Bournemouth ca. 13:30-18:00: We visit the beach and the popular areas at the pier and lower gardens. Swimsuits appreciated.**

**Stonehenge (for groups only, on request only) ca.13:30-18:00:** Students will walk in the footsteps of our Neolithic ancestors at Stonehenge – one of the wonders of the world and the best-known prehistoric monument in Europe. They can explore the ancient landscape on foot and step inside the Neolithic Houses to discover the tools and objects of everyday Neolithic life. Visit the world-class exhibition and visitor centre with 250 ancient objects and come face to face with a 5.500 years-old man. **A supplement of £20 per person applies.**

**Information for closed groups only:** If you wish to visit any sight during one of our trips with your group feel free to contact us. We are happy to arrange entrances for closed groups where possible and if prepaid. Entrances are subject to availability of the chosen sight.



## Students in 2023 (by nationality and age)



Last updated: 26 September 2023